

DirectConnect

Inside Yale Cancer Center

July 20, 2012

Announcements

Therapeutic Radiology Welcomes 3 New Faculty Members

Ranjit S. Bindra, MD, PhD joins Yale School of Medicine from Memorial Sloan-Kettering Cancer Center where he completed his residency in radiation oncology this year. He is a physician-scientist and will care for patients with CNS malignancies and pediatric solid tumors. His lab will be focused on developing novel therapeutics, which can be used concurrently with radiation therapy and chemotherapy for the treatment of both adult and pediatric brain tumors. Dr. Bindra is a graduate of Yale School of Medicine.



James E. Hansen, MD joined the faculty at Yale after serving as Chief Resident in Therapeutic Radiology for the last year. A physician-scientist, Dr. Hansen's laboratory research focuses on exploring the potential use of cell-penetrating lupus autoantibodies in cancer therapy. His clinical interests include the treatment of lung, CNS, and gastrointestinal malignancies. He is a graduate of David Geffen School of Medicine at the University of California - Los Angeles.

from the desk of
Thomas J. Lynch, Jr., MD
Director, Yale Cancer Center
Physician-in-Chief Smilow Cancer
Hospital at Yale-New Haven



Countdown to the CCSG Submission

67 days

until our CCSG
grant is due on
September 25, 2012.

Join Yale Cancer
Center on Facebook

Like us on Facebook 

Zain A. Husain, MD completed his residency at the University of Maryland Medical Center before joining Yale earlier this month. He will care for patients with head and neck and lung cancers at Smilow Cancer Hospital. Dr. Husain has a special interest in using stereotactic radiosurgery for early stage lung tumors and tumors that have metastasized to the spine. He is a graduate of the University of California - Irvine School of Medicine.



Faculty Profiles

Please take a few minutes to review your profiles on the [Yale Cancer Center website](#) to make sure they are accurate and complete. You can easily find your profile by searching your name in the website search box. All faculty, and their administrative assistants, have access to edit profiles in the Yale School of Medicine system by clicking on "edit this profile" at the bottom of the page and using your Yale login credentials. The information entered into your profile populates the Yale Cancer Center, Yale School of Medicine, Yale-New Haven Hospital, and Yale Medical Group websites so it is important that it is regularly updated. Please contact [Renee Gaudette](#) if you have any questions or concerns.

Notables

Roy S. Herbst, MD, PhD has been elected as one of four new Translational Science Representatives serving on the Thoracic Malignancy Steering Committee (TMSC) for the National Cancer Institute (NCI). The TMSC was established in 2008 to harmonize an efficient, cost-effective, science-driven, and transparent process that will identify and promote the "Best Science" in clinical research of lung and other thoracic malignancies by addressing the design and prioritization of phase III clinical trials and large phase II studies in chest malignancies.

[Learn More >>](#)

The Association of Residents in Radiation Oncology (ARRO) named **Bryan Chang**, Assistant Professor of Therapeutic Radiology and a member of the Radiobiology and Radiotherapy Research Program, **Educator of the Year** for the 2011-12 academic year.

Stacey Scirocco has been named Associate Director of the Office of Protocol Review and Monitoring for Committee Administration for Clinical Research Services at Yale Cancer Center. Stacey returns to Yale Cancer Center from the Yale Center for Clinical Investigation and will work closely with Susan Anderson.

Inside yalecancercenter.org

CV Library

The CV library is a new resource available to our members, with CVs of post-docs and others looking for positions at Yale. Please browse the listings if you have openings, and send the CVs you receive to share.

[Learn More >>](#)

Research in Progress

Video presentations from Yale Cancer Center faculty on current research projects are now available online.

[Learn More >>](#)

In the News

Read recent articles featuring experts from Yale Cancer Center.

[Learn More >>](#)

Subscribe to Yale Cancer Center Answers on iTunes

Yale Cancer Center's weekly radio program on CT Public Radio is ranked number 2 in the world for cancer programs on iTunes. Subscribe to the show.

[Learn More >>](#)

Yale Cancer Center Grand Rounds

Video presentations from Yale Cancer Center members are now available online.

[Learn More >>](#)

DirectConnect Archives

[Learn More >>](#)

Events

July 22; 6 PM

WNPR

Yale Cancer Center Answers

Immunotherapies for Cancer

Cliona Rooney, PhD

Eileen Dehm, RN and **Matthew Burke, APRN**, members of the Thoracic Oncology Program care team, will present "From Clinical Trials to Commercial Use: Oncology Drugs and the Oncology Nurse Coordinator Role in a Clinical Setting" during a poster presentation at the **2012 Annual Evidence Based Practice Conference** sponsored by the **Connecticut Nursing Research Alliance Review Committee**.

Cynthia Waddock has joined the Yale Cancer Center billing office as a Certified Professional Coder - Apprentice (CPC-A).

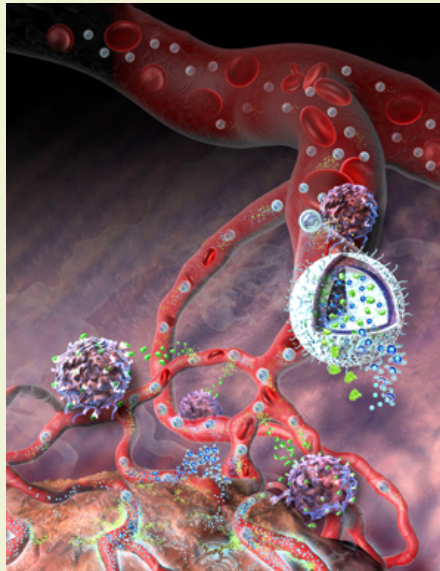
In the News

With Drug-Loaded Nanogel, Yale Researchers Attack Cancerous Tumors

Yale University scientists have developed a new mechanism for attacking cancerous tumors that intensifies the body's immune response while simultaneously weakening the tumor's ability to resist it.

The Yale team, led by Tarek M. Fahmy, a bioengineer at Yale University and member of the Yale Cancer Center Developmental Therapeutics Research Program, developed a new biodegradable nanoparticle that delivers a combination of two very different therapeutic agents to tumor sites, gradually releasing the agents into the tumor vasculature. One agent, a large soluble protein called a cytokine, stimulates the body's innate immune response. The other, a small-molecule inhibitor, interferes with the tumor's ability to suppress the immune response. Other drug combinations are possible.

[Learn More >>](#)



The War on AIDS: Newly Developed Proteins Inhibit HIV Infection

[Learn More >>](#)

July 23; 12:00 PM
WWW 208
Yale Cancer Center Special Seminar
Molecular Airway Field Cancerization: A Platform for Discovery
Humam Kadara, PhD
[Learn More >>](#) (PDF)

July 26; 9 AM
SCH LL Conference Room
Therapeutic Radiology Grand Rounds
Tumor Oxygenation and Radiation Therapy: Past History, Current Projects, and Future Possibilities
Sara Rockwell, PhD
[Learn More >>](#)

July 29; 6 PM
WNPR
Yale Cancer Center Answers
Adverse Events in Cancer Genetic Testing
Karina Brierley, MS
[Learn More >>](#)

Funding Opportunities

Uniting Against Lung Cancer

Uniting Against Lung Cancer announces funding opportunities for research aimed at improved treatment and a cure for lung cancers. Last year, Uniting Against Lung Cancer funded over \$1 million in research; we look forward to increasing our support this year.

The Foundation is prioritizing novel ideas with potential to make a significant impact on current treatment of lung cancer and patient survival, adding years rather than months. We have placed high priority on funding research that has a clear path to clinical application and/or therapeutic development. Proposals for basic science are greatly aided



Yale Cancer Center scientists have developed a new class of proteins that inhibit HIV infection and may open the way to new strategies for treating and preventing infection by the virus that causes AIDS. The findings appear in the July 18 online edition of the *Journal of Virology*.

AIDS slowly weakens the immune system and allows life-threatening infections and cancers to thrive. Led by Daniel DiMaio, the Yale team isolated six 43- and 44-amino acid proteins that inhibited cell-surface and total expression of an essential HIV receptor and blocked HIV infection in laboratory cell cultures.

The proteins were modeled after a protein from a papillomavirus that causes warts in cows. This bovine papillomavirus is related to the human papillomaviruses that cause cervical cancer and some head and neck cancers.

[Learn More >>](#)

Closer to Free

The BoDeans to Perform *Closer to Free*

The BoDeans, the 80 and 90s rock band who released the song "*Closer to Free*" on their 1993 album will perform on the New Haven Green on Friday, August 10th at 7 PM as part of the free Music on the Green series sponsored by Yale-New Haven Hospital. *Closer to Free* is the inspiration behind the [advertising campaign](#) for Smilow Cancer Hospital, the [Closer to Free fund](#) and our annual [Closer to Free bike ride](#).

[Learn More >>](#)

Join us on September 8, 2012 for the Closer to Free Ride

by a forward-looking research plan outlining clinical potential. UALC funding is intended primarily as seed money for promising and potentially transformative new projects, rather than funding projects that already receive considerable support. Cross discipline collaborations are strongly encouraged. Proposals do not require large amounts of preliminary data, but must have a clear hypothesis and research plan to be completed within the two-year grant term.

Application Deadline:

August 15, 2012

[Learn More >>](#)

Alex's Lemonade Stand Foundation Epidemiology Grants

These grants are designed to support the research of investigators who have a specific focus on the epidemiology, early detection or the prevention of childhood cancer. ALSF will award support to established investigators who have a track record of peer-reviewed publications in relevant areas. These awards are expected to provide additional funds that will allow investigators to pursue novel and promising epidemiological approaches to understanding the cause of childhood cancers and how such insight can be used for early detection or prevention of childhood cancer.

Application Deadline:

December 17, 2012

[Learn More >>](#) (PDF)

Gabrielle's Angels Foundation

Gabrielle's Angel Foundation funds the nation's best science in the fields of leukemia, lymphoma, and related cancers of the blood. The Foundation not only funds conventional scientific research, but also projects that combine integrative (complementary) therapies or botanical agents. We focus on



[Watch Video >>](#)

Employee Profile: Teresa White, RN

The Employee Profile recognizes the diverse contributions made by Yale Cancer Center and Smilow Cancer Hospital staff have to meet our patient care, research, education, and outreach goals. The staff profiled are examples of the great work being done here, and the dedication and values we possess. To suggest someone to be profiled, please contact [Emily Fenton](#).

Teresa White, RN, BSN, OCN, is a Clinical Research Nurse for our Clinical Trials Office (CTO). She works with physicians and clinical trial assistants to review patient cases and helps patients navigate through the process of participating in a clinical trial. She begins by reviewing their history, and assessing whether or not they are eligible for a specific trial.

Teresa became a nurse right out of high school, and has always been involved in the field of oncology. She has been in her current position for just under a year, and is focused on Phase I trials for Gastrointestinal tumors. It is the nurses' role within each disease area to make sure patients have access to the trials that are available to them.

Teresa's main role is patient education. She meets with patients on a daily basis to make sure they are receiving the appropriate treatment and care. She helps them to understand the medications they are taking, when and how to take them, which ones need to be taken with food, and which ones without. She monitors side effects,



projects for cancer prevention, detection and treatment that are most likely to be translated into clinical trials within a 3-5 year period. These Medical Research Awards, distributed on a yearly basis, each total \$225,000.00 and are given over a three-year period.

**Application Deadline:
September 12, 2012**

[Learn More >>](#)

Employment Opportunities

Yale Cancer Center has several positions open.

Please share these opportunities with colleagues who may be interested in joining our team.

Operations Manager; Urology
Req# 17466

Clinical Secretary
Req# 17600

Data Manager
Req# 16340

CRN 2: Clinical Research
Nurse
Req# 17202

Assistant Administrator
Req# 17846

Financial Analyst
Req# 17140

[Learn More >>](#)

Submissions

Please submit your recent publication and grant announcements to:

makes sure patients are scheduled for the correct tests and scans, and that they are meeting with their doctor regularly. Teresa commented that it is very labor intensive, but she enjoys working with patients and their families and is very happy that she gets to be part of a process that may have great benefit for the patient.

"Patients are coming to us because all other options have failed. We are doing Phase I, II, and III clinical trials here at Yale and for a lot of people, it's their final hope. It is an amazing experience to see a new drug benefit these patients that are so full of hope and still have so much to offer," Teresa said.

Renee Gaudette
Director, Public Affairs and
Marketing

renee.gaudette@yale.edu

 Forward to a Friend

Recent Publications

Transmember protein aptamers that inhibit CCR5 expression and HIV co-receptor function.

Scheideman EH, Marlatt SA, Xie Y, Hu Y, Sutton RE, Dimaio D. J Virol. 2012 Jul 18.

[Learn More >>](#)

Combination delivery of TGF- β inhibitor and IL-2 by nanoscale liposomal polymeric gels enhances tumour immunotherapy.

Park J, Wrzesinski SH, Stern E, Look M, Criscione J, Ragheb R, Jay SM, Demento SL, Agawu A, Licona Limon P, Ferrandino AF, Gonzalez D, Habermann A, Flavell RA, Fahmy TM.

Nat Mater. 2012 Jul 15.

[Learn More >>](#)

Live imaging of stem cell and progeny behaviour in physiological hair-follicle regeneration.

Rompolas P, Deschene ER, Zito G, Gonzalez DG, Saotome I, Haberman AM, Greco V.

Nature. 2012 Jul 1.

[Learn More >>](#)

Management of brain metastases: surgery, radiation, or both?

Patel TR, Knisely JP, Chiang VL.

Hematol Oncol Clin North Am. 2012 Aug;26(4):933-47.

[Learn More >>](#)

Complications of brain tumors and their treatment.

Lacy J, Saadati H, Yu JB.

Hematol Oncol Clin North Am. 2012 Aug;26(4):779-96.

[Learn More >>](#)

Arg/Abl2 promotes invasion and attenuates proliferation of breast cancer in vivo.

Gil-Henn H, Patsialou A, Wang Y, Warren MS, Condeelis JS, Koleske AJ.

Oncogene. 2012 Jul 9.

[Learn More >>](#)

Multitargeted Tyrosine Kinase Inhibitors in Unselected Patients With Advanced Non-Small-Cell Lung Cancer (NSCLC): Impressions From MONET (the Motesanib NSCLC Efficacy and Tolerability Study).

Morgensztern D, Herbst RS.
J Clin Oncol. 2012 Jul 2

[Learn More >>](#)

Use of fenbendazole-containing therapeutic diets for mice in experimental cancer therapy studies.

Duan Q, Liu Y, Booth CJ, Rockwell S.
J Am Assoc Lab Anim Sci. 2012;51(2):224-30.

[Learn More >>](#)

Patterns of subsequent malignancies after Hodgkin lymphoma in children and adults.

Omer B, Kadan-Lottick NS, Roberts KB, Wang R, Demsky C, Kupfer GM, Cooper D, Seropian S, Ma X.
Br J Haematol. 2012 Jul 6.

[Learn More >>](#)

Identification of Breast Cancer Prognosis Markers via Integrative Analysis.

Ma S, Dai Y, Huang J, Xie Y.
Comput Stat Data Anal. 2012 Sep 1;56(9):2718-2728.

[Learn More >>](#)

Poly (ADP-ribose) polymerase inhibitors: on the horizon of tailored and personalized therapies for epithelial ovarian cancer.

Ratner ES, Sartorelli AC, Lin ZP.
Curr Opin Oncol. 2012 Jun 30.

[Learn More >>](#)

Antibody-Recruiting Molecules: An Emerging Paradigm for Engaging Immune Function in Treating Human Disease.

McEnaney PJ, Parker CG, Zhang AX, Spiegel DA.
ACS Chem Biol. 2012 Jul 3.

[Learn More >>](#)

One step at a time: self-management and transitions among women with ovarian cancer.

Schulman-Green D, Bradley EH, Nicholson NR, George E, Indeck A, McCorkle R.
Oncol Nurs Forum. 2012 Jul 1;39(4):354-60.

[Learn More >>](#)

Validation of the louisville breast sentinel node prediction models and a proposed modification to guide management of the node positive axilla.

Lannin DR, Killelea B, Horowitz N, Chagpar AB.
Am Surg. 2012 Jul;78(7):761-5.

[Learn More >>](#)

