

July 6, 2012

## Announcements

### Daniel Petrylak Named Head of Prostate and GU Medical Oncology

Roy Herbst and I are pleased to announce the appointment of Daniel P. Petrylak, MD, an internationally known medical oncologist, to lead the genitourinary cancers medical oncology team at Smilow Cancer Hospital at Yale-New Haven and as director of the prostate cancer research group. Dr. Petrylak joins Yale Cancer Center and Smilow Cancer Hospital from New York Presbyterian Hospital/Columbia University Medical Center. He will begin his new appointment at Yale on September 1, 2012.



Dr. Petrylak is an expert in the treatment of genitourinary (GU) malignancies and is a national leader in clinical trials for advanced prostate cancer. He also conducts research in bladder cancer is the head of the advanced bladder subcommittee of the Southwest Oncology Group (SWOG) genitourinary committee. Dr. Petrylak has served as principal investigator or co-principal investigator on 7 SWOG protocols. Most notably, he served as the PI for a randomized trial comparing docetaxel and estramustine to mitoxantrone and prednisone in men with hormone refractory prostate cancer. This trial was one of two studies that demonstrated a survival benefit for docetaxel-based therapy in men with advanced prostate cancer and supported the approval of docetaxel for hormone refractory prostate cancer by the FDA.

*from the desk of*

**Thomas J. Lynch, Jr., MD**

Director, Yale Cancer Center  
Physician-in-Chief Smilow Cancer  
Hospital at Yale-New Haven



## Countdown to the CCSG Submission

## 81 days

until our CCSG  
grant is due on  
September 25, 2012.

Join Yale Cancer  
Center on Facebook

Like us on Facebook 

### YCC UCL Retreat

Yale Cancer Center and University College London held their 3rd annual joint retreat last week in London to discuss research opportunities and possible collaborations between the two institutions. The retreat followed up on initial discussions from the 2011 retreat at Yale and included 8 presentations from Yale Cancer Center faculty, and a keynote lecture by Richard Flavell.

The UCL-YCC connection continues to benefit cancer research at both institutions, and the retreat featured breakout groups discussing projects related to multi-institutional early phase clinical trials, joint grant proposals, anti-PD-1 immunotherapy, head and neck cancer, and DNA repair.



Howard Hochster, Dan DiMaio, and George Miller

### YCC Grand Rounds Evaluation

Please take a moment to complete the end of year evaluation for Yale Cancer Center's Grand Rounds. The evaluations are used for CME compliance and help us plan our schedule for next year. [Download Evaluation >>](#)

### Faculty Profiles

Please take a few minutes to review your profiles on the [Yale Cancer Center](#) website to make sure they are accurate and complete. You can easily find your profile by searching your name in the website search box. All faculty, and their administrative assistants, have access to edit profiles in the Yale School of Medicine system by clicking on "edit this profile" at the bottom of the page and sing your Yale login credentials.

The information entered into your profile populates the Yale Cancer Center, Yale School of Medicine, Yale-New Haven Hospital, and Yale Medical Group websites so it is important that it is regularly updated. Please contact [Renee Gaudette](#) if you have any questions or concerns.

## Notables

---

### Inside [yalecancercenter.org](#)

#### CV Library

The CV library is a new resource available to our members, with CVs of post-docs and others looking for positions at Yale. Please browse the listings if you have openings, and send the CVs you receive to share.

[Learn More >>](#)

#### Research in Progress

Video presentations from Yale Cancer Center faculty on current research projects are now available online.

[Learn More >>](#)

#### In the News

Read recent articles featuring experts from Yale Cancer Center.

[Learn More >>](#)

#### Subscribe to Yale Cancer Center Answers on iTunes

Yale Cancer Center's weekly radio program on CT Public Radio is ranked number 2 in the world for cancer programs on iTunes. Subscribe to the show.

[Learn More >>](#)

#### Yale Cancer Center Grand Rounds

Video presentations from Yale Cancer Center members are now available online.

[Learn More >>](#)

#### DirectConnect Archives

[Learn More >>](#)

---

## Events

**Peter Glazer and Regina Hooley** have been awarded grants through the **Women's Health Research at Yale** program. Dr. Glazer's study will focus on an antibody, 3E10, and its ability to improve the efficacy of chemotherapy and radiation to treat breast and ovarian cancers. Dr. Hooley will use the grant funding to review the results of breast ultrasound screening in Connecticut since 2009 to determine its usefulness in screening women for breast cancer.

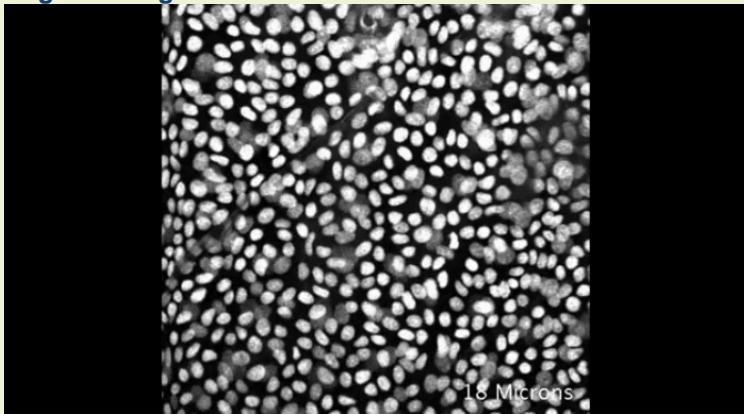
[Learn More >>](#)

Two Yale Cancer Center members were recently honored with awards from the Yale School of Medicine. **Farzana Pashankar** received the Department of Pediatrics Teaching Award and **Kavita Dhodapkar** recently the Department of Pediatrics Junior Faculty Research Award.

---

## In the News

### In Real Time, Yale Scientists Watch Stem Cells at Work Regenerating Tissue



Scientists have for the first time watched and manipulated stem cells as they regenerate tissue in an uninjured mammal, Yale researchers report July 1 online in the journal *Nature*.

Using a sophisticated imaging technique, the researchers also demonstrated that mice lacking a certain type of cell do not regrow hair. The same technique could shed light on how stem cells interact with other cells and trigger repairs in a variety of other organs, including lung and heart tissue.

"This tells us a lot about how the tissue regeneration process works," said Valentina Greco, Assistant Professor of Genetics and of Dermatology at the Yale Stem Cell Center, researcher for the Yale Cancer Center and senior author of the study.

Greco and her team focused on stem cell behavior in the hair follicle of the mouse. The accessibility of the hair follicle allowed real-time and non-invasive imaging through a technology called 2-photon intravital microscopy.

**July 8; 6 PM**  
**Yale Cancer Center Answers**  
WNPR  
*Sexuality and Cancer*  
Elena Ratner, MD  
[Learn More >>](#)

**July 12; 9 AM**  
**Therapeutic Radiology Grand Rounds**  
SCH LL Conference Room  
*Rehabilitation and Nutrition in Survivorship*  
Maura Harrigan, RD  
[Learn More >>](#)

**July 15; 6 PM**  
**Yale Cancer Center Answers**  
WNPR  
*Melanoma*  
Harriet Kluger, MD  
[Learn More >>](#)

**July 19; 9 AM**  
**Therapeutic Radiology Grand Rounds**  
SCH LL Conference Room  
*The Importance of Local Control in Unresectable Pancreatic Cancer, and Its Potential Impact on Survival*  
Edgar Ben-Josef, MD  
[Learn More >>](#)

---

## Funding Opportunities

**Gabrielle's Angels Foundation Grant Opportunities**  
Gabrielle's Angel Foundation funds the nation's best science in the fields of leukemia, lymphoma, and related cancers of the blood. The Foundation not only funds conventional scientific research, but also projects that combine integrative (complementary) therapies or botanical agents. We focus on projects for cancer prevention, detection and treatment that are most likely to be translated into clinical trials within a 3-5 year period. These Medical Research Awards, distributed on a yearly basis, each total \$225,000.00 and are

[Learn More >>](#)

## News from the Cancer Care Centers



Anne Chiang and Roy Herbst

On June 21, 14 specialists from the Smilow Cancer Hospital clinical programs, including surgery, cardiology, nephrology, interventional pulmonology, and gastroenterology, met with our newest faculty in medical oncology from the Smilow Cancer Centers as well as from Greenwich to discuss cancer care options through the Smilow Cancer Network. Physicians from the new Torrington and Sharon Cancer Care Centers also attended.

Over the last few months, Roy Herbst and Anne Chiang have visited the 6 Cancer Care Centers that joined the Smilow in January and have plans to visit the two newest locations in Torrington and Sharon soon.

## Germ-Cell DNA Bank

The Department of Therapeutic Radiology has been developing a germ-line cancer sample collection of patient's treated at Yale University. There is ample germ-line DNA available, as well as sequenome platform plates being built containing ovarian cancer patients, or containing breast cancer patients. In all cases patients are clinically fully annotated and have cancer specific follow up information. If you are interested in this resource, please contact the study PI, [Joanne Weidhaas](#), for pricing information.

given over a three-year period.

**Application Deadline:**  
**September 12, 2012**

[Learn More >>](#)

## Employment Opportunities

Yale Cancer Center has several positions open.

Please share these opportunities with colleagues who may be interested in joining our team.

Operations Manager; Urology  
Req# 17466

Medical Assistant  
Req# 17568

Data Manager  
Req# 16340

CRN 2: Clinical Research Nurse  
Req# 17202

Registered Nurse; Pediatrics  
Req# 17021

[Learn More >>](#)

## Submissions

Please submit your recent publication and grant announcements to:

**Renee Gaudette**  
Director, Public Affairs and  
Marketing

[renee.gaudette@yale.edu](mailto:renee.gaudette@yale.edu)

 [Forward to a Friend](#)

---

## Closer to Free Bike Ride

Join us on September 8, 2012



[Watch Video >>](#)

---

## Employee Profile: Michele Dingus

*The Employee Profile recognizes the diverse contributions made by Yale Cancer Center and Smilow Cancer Hospital staff have to meet our patient care, research, education, and outreach goals. The staff profiled are examples of the great work being done here, and the dedication and values we possess. To suggest someone to be profiled, please contact [Emily Fenton](#).*

As an Accountant for Yale Cancer Center's Business Office, Michele Dingus is responsible for the many day to day financial operations for the Cancer Center including billing, expense reports, and purchase orders. She also assists in grant submissions by preparing budgets and applications, including grant progress reports. In order to obtain the necessary information for these, she collaborates with other departments, administrative assistants, and even other universities.



Michele is also responsible for four Internal Service Providers and she assists in the calculation of their rates and oversees the monthly billing process. She works with several principal investigators within the Cancer Center and manages the numerous pilots that are issued to principle investigators in various departments.



"I am very lucky to be part of a team that works well together. It is an extremely rewarding job because I know that everything we do supports cancer research in some way," Michele said.

Michele has been in her current position for almost two years and began at Yale working for the Yale Center for Clinical Investigation. Having been diagnosed with Chronic Myelogenous Leukemia (CML) in 2001, the work she does at the Cancer Center is especially close to her heart. She commented that she enjoys her job because in some way she feels like it helps to facilitate someone else's recovery.

Adam Roshka, Associate Administrator for the Business Office, commented, "Michele is hardworking and dedicated and approaches her responsibilities with an optimistic view. Her ability to handle complex grant budgets and applications, including the Cancer Center Support Grant, has made her an essential member of our team."

---

## Recent Publications

### **Tobacco Assessment in Actively Accruing National Cancer Institute Cooperative Group Program Clinical Trials.**

Peters EN, Torres E, Toll BA, Cummings KM, Gritz ER, Hyland A, Herbst RS, Marshall JR, Warren GW.

J Clin Oncol. 2012 Jun 11.

[Learn More >>](#)

### **Parathyroid Hormone-Related Protein: An Update.**

Wysolmerski JJ.

J Clin Endocrinol Metab. 2012 Jun 28.

[Learn More >>](#)

### **Lymph Node Evaluation by Open or Video-Assisted Approaches in 11,500 Anatomic Lung Cancer Resections.**

Boffa DJ, Kosinski AS, Paul S, Mitchell JD, Onaitis M.

Ann Thorac Surg. 2012 Jun 26.

[Learn More >>](#)

### **A case of groans, moans and stones with malignant undertones: Endometrioid carcinoma-associated hypercalcemia.**

Visnyei K, Shahrokni A, Hashmi S, Orell J, Wild DM.

Oncol Lett. 2012 Feb;3(2):335-337. Epub 2011 Nov 8.

[Learn More >>](#)

### **Identification of Somatic Mutations in Parathyroid Tumors Using Whole-Exome Sequencing.**

Cromer MK, Starker LF, Choi M, Udelsman R, Nelson-Williams C, Lifton RP, Carling T.

J Clin Endocrinol Metab. 2012 Jun 27.

[Learn More >>](#)

### **Role of excision repair cross-complementation 1 expression as a prognostic marker for response to radiotherapy in early-stage laryngeal cancer.**

Johung K, Rewari A, Wu H, Judson B, Contessa JN, Haffty BG, Decker

RH.

Head Neck. 2012 Jun 28.

[Learn More >>](#)

**Cervical cancer screening in the Vietnamese American population.**

Wong JY, Knobf MT.

Nurse Pract. 2012 Jul 10;37(7):1-4.

[Learn More >>](#)

**Epidemiology of myelodysplastic syndromes.**

Ma X.

Am J Med. 2012 Jul;125(7 Suppl):S2-5.

[Learn More >>](#)

**Contribution of Individual Diseases to Death in Older Adults with Multiple Diseases.**

Tinetti ME, McAvay GJ, Murphy TE, Gross CP, Lin H, Allore HG.

J Am Geriatr Soc. 2012 Jun 26.

[Learn More >>](#)

**Comprehensive DNA methylation analysis of benign and malignant adrenocortical tumors.**

Fonseca AL, Kugelberg J, Starker LF, Scholl U, Choi M, Hellman P, Akerström G, Westin G, Lifton RP, Björklund P, Carling T.

Genes Chromosomes Cancer. 2012 Jun 26.

[Learn More >>](#)

**Screening US in Patients with Mammographically Dense Breasts: Initial Experience with Connecticut Public Act 09-41.**

Hooley RJ, Greenberg KL, Stackhouse RM, Geisel JL, Butler RS, Philpotts LE.

Radiology. 2012 Jun 21.

[Learn More >>](#)

**Aspirin but not ibuprofen use is associated with reduced risk of prostate cancer: a PLCO Study.**

Shebl FM, Sakoda LC, Black A, Koshiol J, Andriole GL, Grubb R, Church TR, Chia D, Zhou C, Chu LW, Huang WY, Peters U, Kirsh VA, Chatterjee N, Leitzmann MF, Hayes RB, Hsing AW.

Br J Cancer. 2012 Jun 26;107(1):207-14.

[Learn More >>](#)