

# DirectConnect

Inside Yale Cancer Center

April 15, 2016

## Announcements

### Smilow to Participate in CMS Oncology Care Model

On March 20, Smilow Cancer Hospital leadership received notification that our application was selected for participation in the Centers for Medicare and Medicaid Services (CMS) Oncology Care Model. This represents a tremendous opportunity for Smilow. The program will support critical infrastructure to provide our patients with urgent care, expanded palliative care, care management, and clinical pathways---each a critical element to improving the value and quality of care we deliver. "As an academic cancer hospital, this will provide us with a national platform to share our work and build our reputation for high quality/high value cancer care," said Dr. Kerin Adelson, Chief Quality Officer at Smilow Cancer Hospital.

### Dr. Pasquale Patrizio Launches Fertility Clinic

Dr. Pasquale Patrizio, Director of the Yale Fertility Center and Fertility Preservation Program, launched a weekly clinic in Smilow Cancer Hospital on Wednesday afternoons on NP1, Suite B. Dr. Patrizio's expertise will help young men needing sperm banking and premenopausal women with a new diagnosis of cancer. Referrals should be made for consultation prior to treatment beginning. He is available to consult with patients from all Smilow Cancer Programs, including pediatrics for those young male and female patients that

from the desk of

**Peter G. Schulam, MD, PhD**

Director, Yale Cancer Center  
and Physician-in-Chief,  
Smilow Cancer Hospital (Interim)



## Recent News

Read recent articles featuring experts from Yale Cancer Center

[News Center >>](#)

## LATEST ARTICLES:



**Dr. Anees Chagpar receives top honor for team paper on cavity shave margins**

could benefit from fertility preservation. Dr. Patrizio will closely collaborate with the referring team to coordinate care. To refer, call (203) 785-4708 or Epic number 28215.

#### **Yale Cancer Center Presents at AACR**

The 2016 annual American Association for Cancer Research meeting will begin tomorrow in New Orleans and many of Yale Cancer Center's members will present their basic and clinical research findings. If you are attending the meeting, please support your colleagues.

[Yale Participation >>](#)

#### **Yale Cancer Center Retreat**

Please join us for Yale Cancer Center's Annual Retreat on Wednesday, May 25, from 8:00AM - 2:00PM, at Yale's West Campus Conference Center. This year's themes are translational research and DNA Damage and Repair. The day will include an overview of the current state of the YCC and presentations on clinical integration, Disease-Aligned Research Teams, and the Cancer Biology Institute. Melinda Irwin, recipient of the first Class of '61 Research Award, will lecture on her research, and there will be a mini-symposium on DNA Damage and Repair. We are also pleased to welcome our Keynote Speaker, Dr. Leona Samson of the Massachusetts Institute of Technology, who is a pioneer in the field of DNA repair. Finally, we will have a working lunch to discuss challenges and opportunities in disease-related research at Yale.

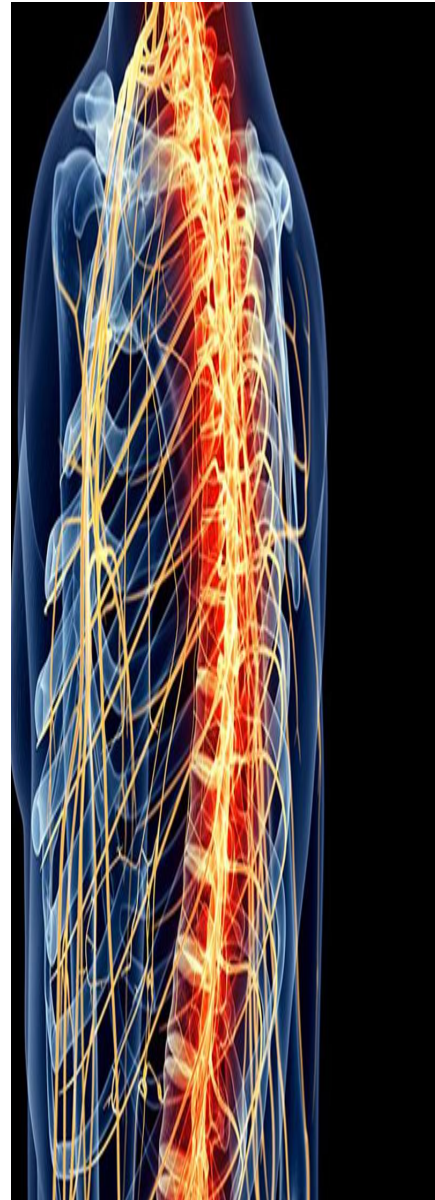
Please reserve this time on your calendar and join the Yale Cancer Center leadership and membership for the retreat. A full agenda and additional details will soon follow. For more information contact [Christine Holmberg](#).

[Please click here to RSVP >>](#)

## **Notables**

**Lajos Pusztai, MD**, Disease Aligned Research Team Leader for the Breast Center and Co-Director of the Yale Cancer Center Genetics, Genomics, and Epigenetics Research Program, has been named

[Read More >>](#)



**Central Nervous System  
Inflammation: A Pathway and  
Possible Drug Target**

[Read More >>](#)

a **Susan G. Komen Scholar** and has also received a Leadership Grant from the organization. Komen Scholars are expected to conduct high quality, original research that answers critical questions to advance the field, and to publish high-impact manuscripts. The leadership grant totals \$200,000 a year.

**Rogério Lilenbaum, MD**, Chief Medical Officer of Smilow Cancer Hospital and Professor of Medicine, has been named a **Fellow of the American Society of Clinical Oncology (FASCO)**. This distinction recognizes ASCO members for their extraordinary volunteer service, dedication, and commitment to ASCO. Dr. Lilenbaum will be honored, along with the 2016 Class of Fellows, at the 2016 ASCO Annual meeting.

**Joseph "Yossi" Schlessinger, PhD**, has been named to the 2016 Class of **Fellows of the American Association of Cancer Research (AACR) Academy**. Dr. Schlessinger, the William H. Prusoff Professor of Pharmacology; Chair of Pharmacology; and founding director of Yale Cancer Biology Institute, is one of 11 prominent scientists inducted into the AACR Academy this year.

**Patricia LoRusso, DO**, Associate Director for Innovation and Professor of Medicine, was recently elected to the **Association of American Physicians (AAP)**, one of North America's oldest medical honor societies. The AAP is composed of more than 1,300 active members and about 600 emeritus and honorary members from around the world.

**Harriet Kluger, MD**, Professor of Medicine, has been named to the **American Society for Clinical Investigation (ASCI)**. The ASCI comprises more than 3,000 physician-scientists from all medical specialties recognized for outstanding records of scholarly achievement in biomedical research.

**Joann Sweasy, PhD**, Associate Director for Basic Research for Yale Cancer Center has announced the winners of Yale Cancer Center's annual **Pilot and Co-Pilot Awards**. Each pilot award is for one year of \$50,000 in funding. Each Co-Pilot award totals \$100,000 in funding and is awarded to a project with



**Breaking silos: the big 'C' in CT's bioscience ambitions is collaboration**

[Read More >>](#)

investigators from multiple research programs. The project's principal investigator is listed for each Pilot Award.

**Pilot Awards:**

**Alfred Bothwell, PhD** (Cancer Immunology):

*Regulation of Anti-tumor Immunity*

**Ann Haberman, PhD** (Cancer Immunology):

*Role of Th cell contacts in B cell lymphoma physiology*

**Beth A. Jones, PhD, MPH** (Cancer Prevention and Control):

*Latin Lean: Translating Lifestyle, Exercise, and Nutrition intervention for at risk community-based Hispanic/Latinas*

**Wu Liu, PhD** (Radiotherapy and Radiobiology):

*Tumor-targeted delivery of theranostic gadolinium nanoparticle*

**James. B. Yu, MD, MHS** (Radiotherapy and Radiobiology):

*Reanalyzing the TARGIT-A Trial: A Novel Data Sharing Collaboration*

**Scott Huntington, MD, MPH** (Cancer Prevention and Control):

*Rituximab use in older patients with B cell malignancies: an investigation into treatment variation and determinants of high quality lymphoma care*

**Mark Solomon, PhD** (Signal Transduction):

*The Role of the Anaphase-Promoting Complex in Human Melanoma*

**Co-Pilot Awards:**

**Ranjit S. Bindra, MD, PhD** (Radiotherapy and Radiobiology); Co-PI: **W. Mark Saltzman, PhD**

(Developmental Therapeutics); **Joseph Piepmeier, MD** (Developmental Therapeutics); **Anita Huttner, MD**

*Nanoparticle-encapsulated Radiosensitizers for the Treatment of Glioblastoma Multiform*



**Chaos, hope, and the lupus butterfly theory**

[Read More >>](#)

**Rong Fan, PhD** (Signal Transduction); Co-PI: **Katerina Politi, PhD** (Signal Transduction)

*Functional alterations in tumor infiltrating lymphocytes in EGFR-driven lung cancer*

**The Smilow Palliative Care Program** was well represented at the recent **American Academy of Hospice and Palliative Medicine** 2016 Annual Assembly in Chicago, March 9-12:

Jennifer Kapo, MD presented, *From Surviving to Thriving: A Self-Care Path to Resilience*.

Laura J. Morrison, MD presented, *Higher Ground- Helping Our HPM Fellowships Continue to Grow and Thrive in an Era of Rapid Change*.

Paper Presentation:

F. Hui, MD, J. Kapo, MD, K. Akgun, MD. *Integrating Palliative Care into the ICU: Experiences, Attitudes, and Barriers of ICU Clinicians*.

Poster Presentations:

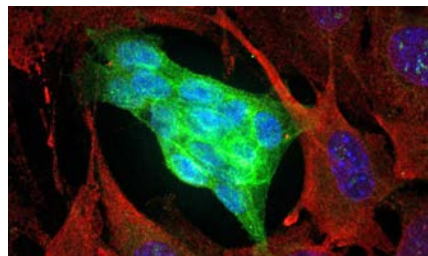
E. Springer, MD, L.J. Morrison, MD. *When A Child Suffers: A Case for a Palliative Care Specialist in a Children's Hospital*

D. Schulman-Green, PhD, C. Smith, MD, MS, MSC, MSCR, J. Lin, MD, MPH, S. Feder, RN, MSN, FNP, N. Bickell, MD, MPH. *What Helps and Hinders Oncologists from Conducting Goals-of-Care Conversations?*

## Employee Profile: Donna Viner

At the Smilow Cancer Hospital Care Center at Derby, Donna Viner, MS-N.Ed., RN, OCN, CNII, a nurse for 38 years, an oncology nurse for 20, provides patient education and support, administers chemotherapy and approaches every patient interaction as a learning opportunity. Donna is also part of the Oncology Nursing Cluster of Smilow Cancer Hospital.

The Nursing Cluster looks at evidence-based information with the goal of improving patient care by helping nurses anticipate patient problems and provide better patient and family education, as well as provides



**Yale researchers discover drug target in rare, lethal glandular cancer**

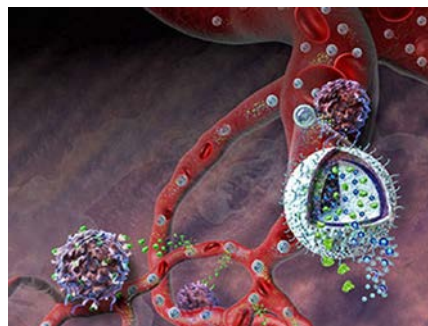
[Read More >>](#)

**Join Yale Cancer Center on Facebook**

Like us on **Facebook** 

**LATEST POSTS:**

An immunotherapy drug delivery system created at Yale Cancer Center that can carry multiple drugs inside a tiny particle is heading toward its first phase of clinical trials.



[Read More >>](#)

A new surgical technique available at Smilow Cancer Hospital leaves no scar behind following surgical removal of the thyroid. "This is going to change thyroid surgery and parathyroid surgery. From the patient's perspective the ability to

education for the nursing staff. One project Donna was a part of was re-instituting Nursing Grand Rounds once a month.

"Each patient has their own unique issues when it comes to treatment, co-morbidities, and physical and emotional side effects. I work to find the best care plan for the individual patient, and listening to them is a huge part of that," said Donna. "Over the years I have seen a lot and I know that a cancer diagnosis is not necessarily a death sentence. I am here to help patients navigate this time and care for them as if they were my own family."

Donna explained that she always knew her path in life was to care for people and that her patients are an inspiration to her every day and teach her as much as she teaches them. Her supervisor Diane Corjulo, Clinical Program Manager for the Smilow Cancer Hospital Care Centers, commented, "Donna is a hardworking, dependable nurse who always puts the patient first. Having recently completed her MSN, coupled with solid clinical skills, she is recognized by her peers and brings comfort to patients in her care. Donna is an integral team member of the Smilow Care Center at Derby and we are very fortunate to have her on our team."

## Funding & Award Opportunities

All current funding opportunities are archived on the Yale Cancer Center website, and searchable by topic, funding agency, and due date. Please check the site often for new opportunities.

[Learn More >>](#)

### YCCI Scholar Awards

YCCI Scholar Awards, which provide salary and/or research funds to a select number of junior faculty members who are strongly committed to careers in clinical research, community-based research or translational research. Individuals must be nominated by a department chair, division head/section chief, or center/program director. The primary aim of these awards is to prepare the applicant for successful

avoid a scar is a very big deal," Dr. Robert Udelsman explained.



[Read More >>](#)

Photographer Jeanna Shepard and advertising executive Jeff Salguero know that children with cancer are much more than just pediatric cancer patients: they are still kids!. That is why Jeanna and Jeff created, "Life Within the Journey," a traveling photography exhibit. This exhibit features portraits of children who are cared for at Smilow Cancer Hospital. Each photo is accompanied by a brief story or commentary.



Photography exhibit proves kids with cancer are still kids

[Read More >>](#)

Each year 50,000 people are diagnosed with an oral head and neck cancer in the U.S. That is why Yale Cancer Center, in memory of John Joe, MD, will offer free Head and Neck Cancer

independent research careers, and emphasis will be placed on career development and mentoring plans. Awards will be for a total of 2 years. Funds can be requested to cover up to 75% of an individual's salary (with a maximum of \$100,000 including fringe benefits per year) and up to \$20,000 of research support per year for a clinical community, or translational research project. Applicants who already have either a career development award or a substantial Departmental start-up package are not eligible for salary support, but may submit an application for up to \$20,000 in research support per year. The Specific Aims of this additional research support must be distinct from the Specific Aims of the career development award.

**Letter of Intent Deadline:** April 25, 2016

[Learn More >>](#)

#### **Yale SPORE in Lung Cancer Developmental Research Program Award**

Provide support of up to \$50,000 for innovative pilot projects focused on a broad spectrum of research, and/or technology development applicable to human lung cancer risk, prevention, diagnosis, prognosis, or treatment.

**Letter of Intent Deadline:** April 29, 2016

[Learn More >>](#)

#### **Yale SPORE in Lung Cancer Career Development Program Award**

The goal of the Career Development Program (CDP) of the Yale SPORE in Lung Cancer (YSILC) is to educate the next generation of investigators committed to translational research in lung cancer. The CDP will provide support of up to \$50,000 to promising junior investigators and/or establish investigators who have not previously conducted lung cancer focused research. Proposed pilot projects should be innovative and be focused on a broad spectrum of research, and/or technology development applicable to human lung cancer risk, prevention, diagnosis, prognosis, or treatment.

**Letter of Intent Deadline:** April 29, 2016

[Learn More >>](#)

Screenings. This 5 minute check up might be able to help you discover if your sore persistent sore throat, hoarse raspiness, or mouth sore is something more than you think. Common risk factors include the use of tobacco, drinking alcohol, poor oral hygiene, and HPV.

April 15: New Haven



### Free Head & Neck Cancer Screenings

April 6 | April 12 | April 15


[Read More >>](#)


#### **Follow Yale Cancer Center on Twitter**


Follow us on [twitter](#)

#### **LATEST TWEETS:**

 It's Not Cancer: Doctors Reclassify a Thyroid Tumor

 Congratulations to Dr. Patricia LoRusso on joining the Association of American Physicians

 Children's cancer research is often ignored. Make it a 'moonshot' priority

 Three days until #AACR16 in New Orleans! Yale #cancer researchers are ready to go!

### Prostate Cancer Foundation Challenge Awards

Challenge awards are awarded to investigations of metastatic, lethal prostate cancer. These awards will be funded depending on the level of innovation in applications received. High risk, currently unfunded projects are most desired.

**Application Deadline:** April 29, 2016

[Learn More >>](#)

### Prostate Cancer Foundation Young Investigator Award

PCF Young Investigator Awards will be three (3) years in duration and will provide \$75,000 per year. The award funds may be used flexibly to advance the career and research efforts of the awardee. Every PCF Young Investigator is required to be under the direct supervision of a mentor. Applicants should be within six-years following completion of a professional degree or clinical training such as MD, PhD, MD-PhD, DSc, ScD, DDM, DDS, DMD, MBBS or equivalent and hold the title of Postdoctoral Fellow, Instructor, Research Associate, Assistant Professor, or equivalent.

**Application Deadline:** April 29, 2016

[Learn More >>](#)

### Taub Foundation Grants

The Taub Foundation Grants Program for Myelodysplastic Syndromes (MDS) Research was created to support high-impact, innovative translational research to understand the underlying causes of MDS and to advance its treatment and prevention. The Program specifically focuses on MDS research, exclusive of AML and MPN. The Program supports translational research that includes bidirectional efforts, building upon research in the laboratory and therapeutic outcomes in the clinic. Studies focusing on molecular genetics, epigenetics, splicing factors, stem cells, the microenvironment and novel therapeutic targets relevant to MDS are encouraged. The Taub Program supports independent investigators at all stages of their careers. Awards are not restricted to investigators currently working in MDS. Applications from investigators in other fields and collaborative efforts are encouraged. Proposals focused on the progression of MDS to AML are not within the scope of this funding.

**Application Deadline:** May 13, 2016

 Congratulations Dr. Lajos Pusztai on being named a Komen Scholar

### Closer to Free

# closer to free

The fund to advance cancer research and enhance patient care

**April 15; 12PM**

#### YCC Research in Progress Series

NP4-101 B

TBA

Stephanie Halene, MD, PhD

[Read More >>](#)

**April 15; 1PM**

#### YCC Developmental Therapeutics Research Program

SHM I-116

*Na<sup>+</sup>/I<sup>-</sup> Symporter (NIS)-Mediated Radio Iodide Treatment as a Novel Therapeutic Tool for Metastatic Breast Cancer*

Nancy Carrasco, MD

[Read More >>](#)

**April 15; 2PM**

#### YCC/SCH Free Head and Neck Cancer Screening

YNHH, East Pavilion Cafeteria

[Read More >>](#)

**April 15; 3PM**

#### YCC / American Cancer Society Fundraiser

Payne Whitney Gymnasium

*11th Annual Relay for Life Walk-a-Thon*

[Read More >>](#)



[Learn More >>](#)

### **2016 AACR Distinguished Lecture on the Science of Cancer Health Disparities**

**Funded by Susan G. Komen®**, the recipient of this award will receive a \$5,000 honorarium and present a 45 minute lecture at the Ninth AACR International Conference on The Science of Cancer Health Disparities in Racial/Ethnic Minorities and the Medically Underserved.

**Application Deadline:** May 18, 2016

[Learn More >>](#)

### **NCCN: Phase I/II Clinical Trials and/or Correlative Studies with Duvelisib for Hematologic Malignancies**

The National Comprehensive Cancer Network (NCCN) has received a 2 Million Dollar research grant from Infinity Pharmaceuticals, Inc. (hereafter, "Grantor") to support NCCN Member Institution faculty for the performance of clinical and/or correlative studies of duvelisib in the treatment of hematologic malignancies. NCCN will serve as the funding organization for these grants that are available only to NCCN investigators.

**Application Deadline:** May 18, 2016

[Learn More >>](#)

### **Damon Runyon Innovation Award**

The Damon Runyon-Rachleff Innovation Award is designed to provide support for the next generation of exceptionally creative thinkers with "high-risk/high-reward" ideas that have the potential to significantly impact our understanding of and/or approaches to the prevention, diagnosis or treatment of cancer.

The Innovation Award is specifically designed to provide funding to extraordinary early career researchers who have an innovative new idea but lack sufficient preliminary data to obtain traditional funding. It is not designed to fund incremental advances. The research supported by the award must be novel, exceptionally creative and, if successful, have the strong potential for high impact in the cancer field.

**Application Deadline:** July 1, 2016

**April 17; 6PM**

### **Yale Cancer Center Answers**

WNPR

*Tobacco Control*

Mark Greenwold, JD

[Read More >>](#)

**April 18; 3PM**

### **YCC Signal Transduction Research Program**

SHM I-116

*Mechanisms of Angiopoietin Regulation of the Tie Family of Receptor Tyrosine Kinases*

Kathryn Ferguson, PhD

[Read More >>](#)

**April 19; 9:30AM**

### **Pathology Research in Progress Talks**

TAC N-107

TBA

Yichong Zhang and Shang-Min Zhang, PhD

[Read More >>](#)

**April 20; 12PM**

### **YCC Cancer Immunology Research Program**

SHM I-116

*PEPping up T Cell Responses to Cancer*

Susan Kaech, PhD

[Read More >>](#)

**April 21; 9AM**

### **Therapeutic Radiology Grand Rounds**

NP4 101-A

*Choosing Wisely: A Tale of Foxes and Henhouses*

Amy Davidoff, PhD

[Read More >>](#)

**April 21; 12:30PM**

[Learn More >>](#)

## Recent Publications

### Health-related quality of life in ovarian cancer survivors: Results from the American Cancer Society's Study of Cancer Survivors - I.

Zhou Y, Irwin ML, Ferrucci LM, McCorkle R, Ercolano EA, Li F, Stein K, Cartmel B.

Gynecol Oncol. 2016 Apr 9.

[Read More >>](#)

### Deletion Mutations Keep Kinase Inhibitors in the Loop.

Freed DM, Park JH, Radhakrishnan R, Lemmon MA.

Cancer Cell. 2016 Apr 11;29(4):423-5

[Read More >>](#)

### Immune Checkpoint Inhibitors in Gynecologic Cancers with Lessons Learned From Non-Gynecologic Cancers.

Menderes G, Hicks C, Black JD, Schwab CL, Santin AD.

Expert Opin Biol Ther. 2016 Apr 12.

[Read More >>](#)

### Multidisciplinary Specialty Teams: A Self-Management Program for Patients With Advanced Cancer.

Tocchi C, McCorkle R, Knobf MT.

J Adv Pract Oncol. 2015 Sep-Oct;6(5):408-16.

[Read More >>](#)

### Clinical response to ruxolitinib in CSF3R T618-mutated chronic neutrophilic leukemia.

Stahl M, Xu ML, Steensma DP, Rampal R, Much M, Zeidan AM.

Ann Hematol. 2016 Apr 11.

### Pathology Grand Rounds

Fitkin Amphitheatre, LMP 1094

*When Watson and Crick Get Linked: DNA Interstrand Crosslink Repair and Human Disease*

Agata Smogorzewska, MD, PhD

[Read More >>](#)

### April 21; 2PM

#### YCC/SCH Cancer Genetics and Prevention Program Meeting

CGPP, Suites 107-109

*Incidental CDH1 mutation. What to do?*

Jessica Digiovanna, MS,CGC

*A case of the unlikely: tuberous sclerosis?*

Cassy Gulden, MS, CGC

[Read More >>](#)

### April 21; 5:30PM

#### Yale Postdoctoral Association / Career Strategy Event

BCMM 206/208

*Research in Germany: Information Session*

Gerrit Roessler, PhD

[Read More >>](#)

### April 22; 12PM

#### YCC Research in Progress Series

NP4-101 B

TBA

Katerina Politi, PhD

[Read More >>](#)

### April 24; 5PM

#### YCC/Jim McNiff Fund for Kidney Cancer Research Fundraiser

Painting with a Twist Studio

*Painting with a Purpose*

[Read More >>](#)

### April 24; 6PM

#### Yale Cancer Center Answers

WNPR 90.5

[Read More >>](#)

**Cost-Effectiveness of Surgery, Stereotactic Body Radiation Therapy, and Systemic Therapy for Pulmonary Oligometastases.**

Lester-Coll NH, Rutter CE, Bledsoe TJ, Goldberg SB, Decker RH, Yu JB.

Int J Radiat Oncol Biol Phys. 2016 Jan 19.

[Read More >>](#)

**Migration-Inducing Gene 7 promotes tumorigenesis and angiogenesis and independently predicts poor prognosis of epithelial ovarian cancer.**

Huang B, Yin M, Li X, Cao G, Qi J, Lou G, Sheng S, Kou J, Chen K, Yu B.

Oncotarget. 2016 Mar 30.

[Read More >>](#)

**Downregulation of ATOH8 induced by EBV-encoded LMP1 contributes to the malignant phenotype of nasopharyngeal carcinoma.**

Wang Z, Xie J, Yan M, Wang J, Wang X, Zhang J, Zhang Y, Li P, Lei X, Huang Q, Lin S, Guo X, Liu Q.

Oncotarget. 2016 Mar 31.

[Read More >>](#)

**GSK-3 $\alpha$  Is a Novel Target of CREB and CREB-GSK-3 $\alpha$  Signaling Participates in Cell Viability in Lung Cancer.**

Park SA, Lee JW, Herbst RS, Koo JS.

PLoS One. 2016 Apr 6;11(4):e0153075.

[Read More >>](#)

**BILATERAL DIFFUSE UVEAL MELANOCYTIC PROLIFERATION: A CASE REPORT.**

Alasil T, Coady PA, Koudsi S, Mathur M, Materin MA.

Retin Cases Brief Rep. 2016 Apr 4.

[Read More >>](#)

*Bringing Clinical Trials into our Communities*

Andrea Silber, MD and Jose DeJesus

[Read More >>](#)

**April 25; 7:15AM**

**YCC Radiobiology and Radiotherapy Cancer Center Program Retreat**

TAC N-107

*DNA Repair and Cancer Therapy*

[Read More >>](#)

**April 25; 12:30PM**

**The Consortium for New England Childhood Cancer Survivors**

Park Street Seminar, Room 202

*2016 Spring Symposium*

Nina Kadan-Lottick, MD

[Read More >>](#)

**April 26; 9:30AM**

**Pathology Research in Progress**

TAC N-107

TBA

Ryann Guayasamin

[Read More >>](#)

**April 26; 12PM**

**Yale Cancer Center Grand Rounds**

Park Street Auditorium

TBA

Linda Niccolai, PhD

*Neurologic Complication of Childhood Cancer*

Nicole Ullrich, MD, PhD

[Read More >>](#)

**April 26; 5PM**

**YCC Breast Clinical Lecture Series**

Smilow first floor conference room, 1-330

TBA

[Read More >>](#)

**April 27; 12PM**

**YCC Cancer Prevention & Control  
Research Program Seminar**

Yale School of Public Health, Room 102

*Inflammation and Lipids: An Old Link  
with New Opportunities for Cancer  
Prevention*

Madhav Dhodapkar, MD

[Read More >>](#)

**April 27; 1PM**

**YCC Genetics and Genomics  
Research Program**

SHM B-201

*New Insights Into Colon Cancer  
Genetics*

Xavier Llor, MD, PHD

[Read More >>](#)

**April 28; 12:30PM**

**Pathology Grand Rounds**

Fitkin Amphitheatre, LMP 1094

*Metabolic Flux Into Pyrimidine  
Biosynthesis Pathway Imparts Poor  
Chemotherapy Responsiveness in  
Pancreatic Cancer*

Pankaj K. Singh, PhD

[Read More >>](#)

**April 28; 2PM**

**YCC/SCH Free Head and Neck  
Cancer Screening**

CGPP, Suites 107-109

TBA

[Read More >>](#)

**April 29; 12PM**

**YCC Research in Progress Series**

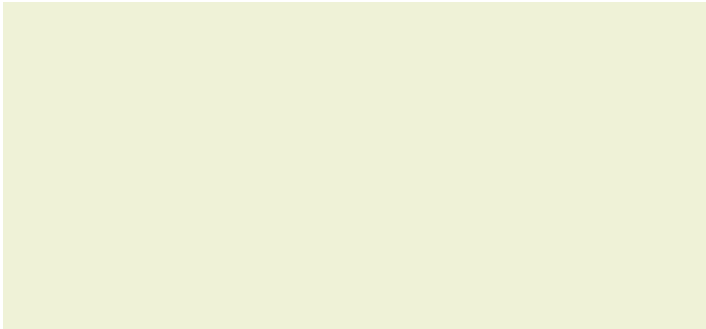
NP4-101 B

TBA

[Read More >>](#)

**Submissions**

Please submit your recent  
publication and grant



announcements to:

**Renee Gaudette**  
Director, Public Affairs and Marketing  
[renee.gaudette@yale.edu](mailto:renee.gaudette@yale.edu)

