

DirectConnect

Inside Yale Cancer Center

December 16, 2016

Announcements

Commission on Cancer Accreditation



Commission
on Cancer®
ACCREDITED
PROGRAM

A QUALITY PROGRAM
of the AMERICAN COLLEGE
OF SURGEONS

I am very pleased to announce that Smilow Cancer Hospital and our Care Centers have received Full Accreditation status from the American College of Surgeons Commission on Cancer. This follows an extensive re-application process and site visit led by Dr. David Fischer, Dr. Harold Tara, and Dr. Rogerio Lilenbaum, along with Terri Vega, Manager of the Smilow Cancer Hospital Tumor Registry. Their leadership on our Cancer Committee and attention to the reporting standards for our accreditation process led us to our full accreditation award for the next three years with Commendation in five of the six possible standards. Thank you to the entire committee for their work throughout the year to ensure that we continue to focus on quality and meet the treatment standards set forth by the Commission.

Class of 1961 Award

The leadership of Yale

Cancer Center is proud to announce Susan Kaech, PhD, as the recipient of the 2016 Class of '61 Cancer Research Award. Dr. Kaech is the Waldemar Von Zedtwitz Professor of Immunobiology at Yale, and an expert on the immunology of T lymphocytes. Recently, she expanded her focus to human translational studies and has developed numerous collaborations with both clinical and lab investigators throughout the



from the desk of

Peter G. Schulam, MD, PhD

Director, Yale Cancer Center

and Physician-in-Chief,

Smilow Cancer Hospital (Interim)

Yale NewHaven Health

Smilow Cancer Hospital

Yale

CANCER
CENTER

A Comprehensive Cancer Center Designated
by the National Cancer Institute

Recent News

Read recent articles featuring experts from Yale Cancer Center

[News Center >>](#)

LATEST ARTICLES:

Clinical Pathways Through Quality Metrics: ASCO's Quality Oncology Practice Initiative

Cancer Center. One letter of nomination noted, "Sue is working diligently to make Yale into a center of excellence for tumor immunobiology and tumor immune therapy...I expect her impact on the field will continue to expand rapidly over the next several years." Congratulations Dr. Kaech!

Calabresi Lectureship



Charles Fuchs, Steven Calabresi, Roy Herbst, Peter Calabresi, Guido Calabresi (standing)
Vincent DeVita and Elizabeth DeVita

On Tuesday, Yale Cancer Center held the Paul Calabresi, MD Memorial Lectureship during Grand Rounds. This year, Dr. Roy Herbst was honored to host Dr. Vincent DeVita, Jr., and Elizabeth DeVita Raeburn to discuss their book, *The Death of Cancer*. Dr. Calabresi's brother, the Honorable Guido Calabresi, and son, Dr. Peter Calabresi led the book discussion. Dr. DeVita shared his insight into the cancer research and drug development process, beginning with the National Cancer Act of 1971, and many of his personal stories from his time at the NCI. Elizabeth co-authored the book with her father and discussed their writing process. Following grand rounds, Dr. DeVita and Elizabeth spent time with our fellows answering questions and discussing career options and research endeavors.

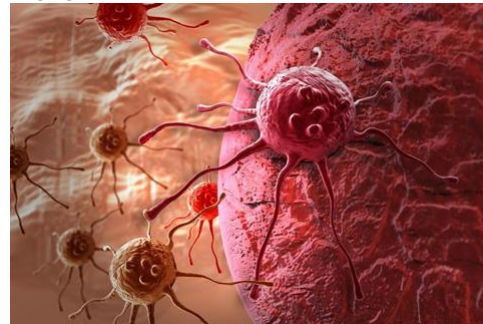
In Memoriam: Lawrence Solomon, MD

We are saddened to share the news that Dr. Lawrence Solomon passed away earlier this week. Dr. Solomon was an outstanding faculty member in the section of hematology and the founder of our palliative care program here at Yale Cancer Center and Yale New Haven Hospital. He shared his passion for patient care and education with many of us throughout his esteemed career at Yale School of Medicine, and many of our fellows benefited from his wisdom during their



[Read More >>](#)

We need an Overdiagnosis Awareness month



[Read More >>](#)

Immune System, Unleashed by Cancer Therapies, Can Attack Organs



[Read More >>](#)

New drug for patients with late-stage lung cancer



rotations. Dr. Solomon also served as director of the adult sickle cell program and provided wonderful care for his patients through that program for many years. Information on services for Dr. Solomon will be shared when the family has announced arrangements.

Addgene

Tyler Ford, an Outreach Scientist at Addgene, will be on Campus on Tuesday December 20 to get Yale Cancer Center's members' thoughts on Addgene and to help facilitate plasmid deposits. Addgene helps researchers all over the world share plasmids with one another and it's completely free to deposit. If you're interested in learning more, please contact [Tyler Ford](#).

Notables

Dr. Andrea Silber, Associate Clinical Professor of Medicine (Medical Oncology) at Yale School of Medicine, was recently awarded **The CT Cancer Partnership 2016 Cancer Champion Award**. The award recognizes contributions to cancer prevention and control in the state of Connecticut.

[Learn More >>](#)

The Connecticut Cancer Partnership held its annual meeting last week highlighting Cancer and Health Policy. Yale Cancer Center's **Amy Davidoff, PhD, MS** presented on *Cancer Care Coverage under the ACA and Medicare*. **Patricia LoRusso, DO** led a roundtable discussion on *The National Cancer Moonshot: Bringing Clinical Trials to our Patients*.

[Learn More >>](#)

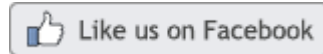
Research in the News

Subtype of triple negative breast cancer responds better to chemotherapy

Researchers at Yale Cancer Center have identified a new subtype of triple negative breast cancer that shows significantly improved response to chemotherapy. Patients with the newly defined subtype - BRCA-deficient triple negative breast cancer - had significantly higher survival rates with chemotherapy.

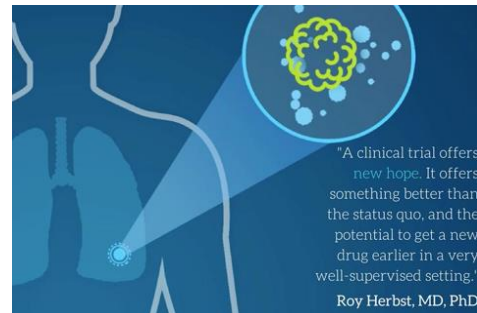
[Read More >>](#)

Join Smilow Cancer Hospital on Facebook



LATEST POSTS:

Here at Smilow Cancer Hospital, we're proud to be an institution pushing the boundaries of specialized treatment and immunotherapy. Participating in Lung-MAP, a multi-drug, multi-arm clinical trial aimed at evaluating new treatments for squamous cell lung cancer, is just one of the ways we do this. Check out this video explaining the program, including a testimony from one man whose life was changed by Lung-MAP, as well as an overview of clinical trials as a whole.



[Read More >>](#)

Please join us for a condensed version of the Nutcracker, featuring the Connecticut Youth Ballet, this Saturday, December 17 at 11:30, in New Haven. A cupcake reception will follow.



[Read More >>](#)

Did you know that prostate cancer is the

The research team found that TNBC tumors carrying mutations in the AR and FOXA1 pathways had a significantly higher response rate - 94.1% compared to 16.6% in tumors without the mutations.

[Read More >>](#)

Alternative Option to Intensive Chemotherapy for Patients with relapsed/refractory Acute Myeloid Leukemia (AML)

A Yale Cancer Center team has evaluated the use of hypomethylating agents in patients suffering from Acute Myeloid Leukemia (AML) who were resistant to treatment with intensive chemotherapy. Study results revealed that the complete response rate to hypomethylating agents (HMAs) in patients with refractory or relapsed AML (RR-AML) is about 16%. Among patients who achieved a complete response, the survival was significantly improved compared to those who did not respond. The findings were presented December 5, 2016 at the American Society of Hematology (ASH) meeting in San Diego.

[Read More >>](#)

The Economic Burden of Treatment for Diffuse Large B-Cell Lymphoma

In a recent study, a Yale Cancer Center team confirmed expectations of higher healthcare utilization and costs with relapsed Diffuse Large B-Cell Lymphoma (DLBCL). Using 100% Medicare claims data, the team measured health care utilization following completion of first-line therapy for DLBCL.

The team reviewed Medicare claims data to identify older adults (≥65 years) diagnosed with DLBCL between January 1, 2010 - June 30, 2014. All patients were required to have continuous medical enrollment for 12 months before treatment began and to have received at least one full cycle of valid DLBCL regimen. The team identified 5,909 Medicare beneficiaries who completed first-line treatment for DLBCL, of which 1,552 had claims indicating second-line therapy during follow up (relapsed group).

[Read More >>](#)

New Member Highlight: Janina Longtine, MD

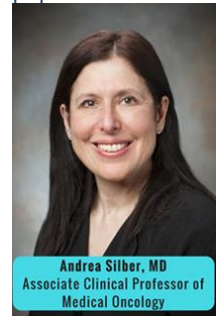
second leading cause of cancer deaths in American men? To learn more about this important topic, tune in to the latest episode of Yale Cancer Answers. Dr. Steven Gore, hosting this week's podcast, will be joined by Dr. Hari Deshpande, Associate Professor of Medical Oncology, to discuss this complex issue. As always, feel free to submit your cancer questions to canceranswers@yale.edu for possible feature on the podcast.



*Prostate Cancer
Awareness*

[Read More >>](#)

Congratulations to Andrea Silber, MD, Associate Clinical Professor of Medical Oncology, for receiving the 2016 Cancer Champion Award from the Connecticut Cancer Partnership. Dr. Silber specializes in breast cancer and leads a program called OWN-IT (Oncologists Welcome NewHaven Into Trials), which aims to make clinical trials more accessible to underserved populations in New Haven.



Andrea Silber, MD
Associate Clinical Professor of
Medical Oncology

**Smilow Cancer
Hospital
oncologist
receives CT
Cancer
Partnership
Cancer
Champion
Award.**

[Read More >>](#)

Follow Yale Cancer Center on Twitter

Follow us on **twitter**

LATEST TWEETS:

Dr. Anne Chiang discusses

Drs. Bosenberg and Pusztai are excited to announce the newest member of the GGE Research Program, Janina Longtine, MD, Professor of Pathology. In addition to Vice Chair of Pathology and Laboratory Medicine at YNH and Director of Molecular and Genomic Diagnostics, Dr. Longtine is also the Director of the Tumor Profiling Lab at Smilow. Dr. Longtine is an internationally recognized leader in her field, and her work and research is central to improving the delivery of cutting-edge clinical genomic reports for cancer patients and their oncologists.



Employee Profile: Candace Conway, RN

Candace Conway, RN is more than a nurse to her patients, she is an advocate, educator, and support system. At the Smilow Cancer Hospital Care Center at Waterbury, Candace delivers chemotherapy and immunotherapy regimens, along with other infusions. She monitors patients to make sure they are tolerating the treatment and there are no adverse events. A large part of her role is also patient education and making sure they have resources and support throughout their care.



Candace received the DAISY Foundation Award in 2015, which honors extraordinary nurses and recognizes them for the care they give to patients. Candace commented that she couldn't imagine doing anything else. "A lot of patients don't have someone to be their voice for them, so I am that voice," said Candace. "The team at the Waterbury Care Center is amazing and we all make the patient the priority every day."

Candace is also the safety coach and the safety point person for the clinic. Candace is also a Reiki Master and

implementing Clinical Pathways Through Quality Metrics: @ASCO's #QOPI #Quality #Oncology

🐦 Janet Brown, community health navigator, and Whitney Allen, comm outreach worker, at the New Haven Adult Ed Health Fair. #NHV #screening

🐦 Thank you @DeVitaDoctor for taking the time to share your insight today with our fellows. - at Smilow Cancer Hospital

🐦 "The secret of caring for the patient is caring for the patient." @DeVitaDoctor on Dr Paul Calabresi #PatientsFirst #Caring

🐦 Proud to welcome @DeVitaDoctor & @devitaraeburn to discuss "The Death of Cancer" during grand rounds honoring Dr. Paul Calabresi. - at Smilow Cancer Hospital

🐦 Download our latest @YaleCancer Answers #podcast to learn about prostate #cancer detection #pcsm

🐦 We need to work together to educate & protect our children. Share this with parents & talk w/ your kids #prevention

🐦 With Breast Cancer Index MDs can help ID pts at highest risk of relapse & likelihood of benefit from Rx @tarasanftmd

🐦 This holiday season, try these tips from #ACS to add some color to your diet #HealthyEating #prevention

🐦 Join @tarasanftmd for presentation on genomic platform #breastcancer index as a Rx decision tool in exhibit hall 1-P2-09-15; 7:30-9 #sabcs16

Closer to Free

closer to free
The fund to advance cancer research and enhance patient care

Upcoming Events

offers complementary energy therapy sessions to patients on her days off. Reiki is a holistic therapy used to channel healing energy and promotes relaxation and produces stress-reduction effects. Many of her patients have found it extremely beneficial.

Tammy Keeman, PCA has worked with Candace for over 15 years and commented, "Candace is one of the best nurses I have ever had the pleasure of working with. She goes above and beyond for her patients, and is a great resource for staff as well. She finds a way to laugh even on the hardest days and her laugh is infectious. Patients always ask for her, and listen for her laugh to help cheer them. She truly is amazing."

Funding and Award Opportunities

All current funding opportunities are archived on the Yale Cancer Center website, and searchable by topic, funding agency, and due date. Please check the site often for new opportunities.

[Learn More >>](#)

Bonnie J. Addario Lung Cancer Foundation 2016 YITA Request for Applications

The YITA awards provide \$500,000 over 2-3 years to TEAMS of young investigators for projects that are out-of-the-box, collaborative, translational and multi-disciplinary.

Deadline for Applications: January 3, 2017

[Learn More >>](#)

Avon Breast Cancer Crusade 2017 Funding

These research initiative funds translational research using clinical studies, human cell culture, epidemiologic, and other progressive approaches to understand the causes of breast cancer and develop new treatments.

Research Program - Supports research projects aimed at understanding the causes of breast cancer, prevention strategies, or developing new treatments for metastatic breast cancer.

Letter of Intent Deadline: January 6, 2017

[Learn More >>](#)

December 16; 1PM

YCC Developmental Therapeutics Research Program

SHM I-304 Negative Regulation of Inflammation

Carla Rothlin, PhD

[Read More >>](#)

December 17; 11:30AM

Connecticut Youth Ballet: The Nutcracker

Park Street Auditorium

[Read More >>](#)

December 20; 12PM

YCC Grand Rounds/Schwartz Center Rounds

Park Street Auditorium Compassionate Care, Beyond the Clinic

Crystal Graham, Jeanette Brooks and Maureen Rosselli

[Read More >>](#)

December 20; 5PM

Digestive Diseases Research Seminar Series

TAC S-247

Magnetic Resonance Biomarkers of Acidosis in Liver Tumor Microenvironment

Dana Peters, PhD

[Read More >>](#)

December 22; 4PM

YCC Breast Clinical Lecture Series

Smilow first floor conference room, 1-330

[Read More >>](#)

January 1; 7:30PM

Yale Cancer Answers

WNPR 90.5

Quality Standards and Cancer Care

Kerin Adelson, MD

[Read More >>](#)

January 3; 12PM

YCC Grand Rounds

Access to Care - Safety Net Hospital Initiative

Supports public, community and safety net hospitals, and health care systems to improve their capacity to provide breast care to low-income, at-risk, uninsured, and underinsured individuals.

Letter of Intent Deadline: January 13, 2017

[Learn More >>](#)

Access to Care - Support Services Program

Application is by invitation only. To seek an invitation, please send a description of the proposed program to grants@avonbcc.org.

[Learn More >>](#)

NCCN Request for Proposals (RFP)

Phase I/II Clinical Trials, Preclinical and Correlative Studies of TAGRISSO™ (osimertinib) for Systemic or CNS EGFR+ Non-Small Cell Lung Cancer (NSCLC)

Application Deadline: January 12, 2017

[Learn More >>](#)

NCCN Foundation 2017 Young Investigator Award

Through its Young Investigator Award (YIA) Program the NCCN Foundation invites proposals from young investigators with innovative ideas and an interest in improving the quality, effectiveness, and efficiency of care provided to cancer patients.

Application Deadline: January 16, 2017

[Learn More >>](#)

Feasibility Studies to Build Collaborative Partnerships in Cancer Research (P20)

Through this FOA, the NCI invites P20 planning grant applications for developing collaborative partnership between institutions serving underserved health disparity populations and underrepresented students (ISUPS) and NCI- designated Cancer Centers.

Application Due Date: January 27, 2017

[Learn More >>](#)

Pancreatic Cancer Action Network Early Detection Targeted Grant

Supports studies utilizing NCI/NIDDK cohort of new onset diabetics with high risk of sporadic pancreatic cancer; projects will focus on blood biomarkers.

Application Deadline: February 1, 2017

Park Street Auditorium

TBA

Joseph Kim, MD and Joachim Baehring, MD

[Read More >>](#)

January 5; 12:30PM

Pathology Grand Rounds

Fitkin Amphitheatre, LMP 1094

Challenges and Opportunities for Tumor Therapy of Advanced Cancer

Mario Sznol, MD

[Learn More >>](#)

January 5; 2:30PM

Smilow Cancer Genetics and Prevention Program Seminar

330 Orchard St., Suites 107-109

[Learn More >>](#)

January 5; 4PM

YCC Breast Clinical Lecture Series

Smilow first floor conference room, 1-330

[Learn More >>](#)

Submissions

Please submit your recent publication and grant announcements to:

Renee Gaudette

Director, Public Affairs and Marketing

renee.gaudette@yale.edu

 Forward to a Friend

[Learn More >>](#)

Pancreatic Cancer Action Network Precision Medicine Targeted Grant

Supports translational and clinically relevant projects that are identified as next steps for our Precision Promise initiative.

Application Deadline: February 1, 2017

[Learn More >>](#)

Utilizing the PLCO Biospecimens Resource to Bridge Gaps in Cancer Etiology and Early Detection Research (U01)

This Funding Opportunity Announcement (FOA) encourages the submission of applications that propose to advance research in cancer etiology and early detection biomarkers, utilizing the advantages of the unique biorepository resources of the NCI-sponsored Prostate, Lung, Colorectal, and Ovarian Cancer (PLCO) Screening Trial.

Application Due Date: February 15, 2017

[Learn More >>](#)

Recent Publications

Predictors of Chemosensitivity in Triple Negative Breast Cancer: An Integrated Genomic Analysis.

Jiang T, Shi W, Wali VB, Pongor LS, Li C, Lau R, Gyórfy B, Lifton RP, Symmans WF, Pusztai L, Hatzis C. PLoS Med. 2016 Dec 13;13(12):e1002193.

[Read More >>](#)

Dual-targeting nanoparticles for in vivo delivery of suicide genes to chemotherapy-resistant ovarian cancer cells.

Cocco E, Deng Y, Shapiro EM, Bortolomai I, Lopez S, Lin K, Bellone S, Cui J, Menderes G, Black JD, Schwab CL, Bonazzoli E, Yang F, Predolini F, Zammataro L, Altwerger G, de Haydu C, Clark M, Alvarenga J, Ratner E, Azodi M, Silasi DA, Schwartz PE, Litkouhi B, Saltzman WM, Santin AD. Mol Cancer Ther. 2016 Dec 12.

[Read More >>](#)

Knowledge of Density and Screening Ultrasound.

Moothathu NS, Philpotts LE, Busch SH, Gross CP, Staib

LH, Hooley RJ. Breast J. 2016 Dec 10.

[Read More >>](#)

Evolution and heterogeneity of non-hereditary colorectal cancer revealed by single-cell exome sequencing.

Wu H, Zhang XY, Hu Z, Hou Q, Zhang H, Li Y, Li S, Yue J, Jiang Z, Weissman SM, Pan X, Ju BG, Wu S. Oncogene. 2016 Dec 12.

[Read More >>](#)

Application of a Prognostic Gleason Grade Grouping System to Assess Distant Prostate Cancer Outcomes.

Leapman MS, Cowan JE, Simko J, Roberge G, Stohr BA, Carroll PR, Cooperberg MR. Eur Urol. 2016 Dec 8.

[Read More >>](#)

Therapy-related myelodysplastic syndromes, or are they?

Abou Zahr A, Kavi AM, Mukherjee S, Zeidan AM. Blood Rev. 2016 Nov 24

[Read More >>](#)

Immunological and infectious risk factors for lung cancer in US veterans with HIV: a longitudinal cohort study.

Sigel K, Wisnivesky J, Crothers K, Gordon K, Brown ST, Rimland D, Rodriguez-Barradas MC, Gibert C, Goetz MB, Bedimo R, Park LS, Dubrow R. Lancet HIV. 2016 Dec 1.

[Read More >>](#)

Evolving Treatment Options for Lung Cancer.

Morgensztern D, Herbst RS. Hematol Oncol Clin North Am. 2017 Feb;31(1):xiii-xiv.

[Read More >>](#)

A prospective cohort study of patients with peripheral T-cell lymphoma in the United States.

Horwitz SM, Pinter-Brown LC, Rosen ST, Pro B, Hsi ED, Federico M, Gisselbrecht C, Schwartz M, Bellm LA, Acosta MA, Shustov AR, Advani RH, Feldman TA, Lechowicz MJ, Smith SM, Lansigan F, Tulpule A, Craig MD, Greer JP, Kahl BS, Leach JW, Morganstein N, Casulo C, Park SI, Foss FM. Cancer. 2016 Dec 2.

[Read More >>](#)

PS01.62: Long-Term Safety and Clinical Activity of Atezolizumab Monotherapy in Metastatic NSCLC: Final Results from a Phase Ia Study: Topic: Medical Oncology.

Gordon MS, Herbst RS, Horn L, Soria JC, Gandhi L, Felip E, Sequist L, Spigel DR, Antonia SJ, Balmanoukian A, Cassier P, Liu B, Kowanetz M, O'Hear C, Fassò M, Sandler A, Gettinger SN. J Thorac Oncol. 2016 Nov;11(11S):S309-S310.

[Read More >>](#)

ORAL01.01: A Prospective, Multi-Institutional Assessment of Four Assays for PD-L1 Expression in NSCLC by Immunohistochemistry: Topic: Pathology.

Rimm D, Han G, Taube JM, Yi ES, Bridge JA, Flieder DB, Homer R, West WW, Wu H, Roden AC, Fujimoto J, Yu H, Anders R, Kowalewski A, Rivard C, Rehman J, Hirsch F, Wistuba II. J Thorac Oncol. 2016 Nov;11(11S):S249.

[Read More >>](#)