

DirectConnect

Inside Yale Cancer Center

December 6, 2019

Announcements

Closer to Free!

I cannot begin to express my great appreciation to all the riders, volunteers, donors, and staff who come together to make our annual Closer to Free Ride a tremendous success. We recently celebrated the final totals from our 9th annual ride in September and were pleased to announce \$3.7 million was raised to support patient care and cancer research at Smilow Cancer Hospital and Yale Cancer Center! Please save the date for September 12, 2020, our 10th annual ride, and take a few moments to watch this video celebrating Closer to Free!



[Watch Video >>](#)

from the desk of
Charles S. Fuchs, MD, MPH
Director, Yale Cancer Center
and Physician-in-Chief
Smilow Cancer Hospital



Yale
NewHaven
Health
Smilow Cancer
Hospital

Yale **CANCER CENTER**
A Comprehensive Cancer Center Designated
by the National Cancer Institute

[News Center](#)

Jeffrey Ishizuka Joins Yale Cancer Center

I am happy to announce the appointment of Jeffrey Ishizuka, MD, PhD, Assistant Professor of Medicine (Medical Oncology). Dr. Ishizuka will join Yale Cancer Center in January from Dana-Farber Cancer Institute (DFCI). He received his BA in Chemistry from Williams College before receiving a Rhodes Scholarship for study and continuing his studies through an NIH-Oxford Biomedical Research Scholarship to complete his DPhil in Immunology. He then earned his MD from Harvard Medical School and completed a postdoctoral fellowship in the Haining Lab at DFCI.



His clinical and research focus is in melanoma. He is currently working on novel strategies to understand and manipulate inflammation within the tumor microenvironment in order to improve cancer immunotherapies. His approaches build off our prior work demonstrating that targeting the innate checkpoints in nucleic acid sensing in tumors can overcome resistance to immune checkpoint blockade.

ASH and SABCS

Our Hematology team is en route to Orlando for the annual American Society of Hematology Annual Meeting this weekend and will represent Yale Cancer Center and Smilow Cancer Hospital with a variety of oral and poster presentations throughout the meeting. In addition, the San Antonio Breast Cancer Symposium begins next Tuesday and our Breast Center physicians and researchers will be presenting their research in Texas.

Please support your colleagues by attending their presentations if you will be in Orlando or San Antonio, or by



Healthy gifts for the holiday that are doctor recommended

[Read More >>](#)



Alexa is a happy and healthy teenager thanks to a life-saving stem cell transplant at Smilow Cancer Hospital.

[Read More >>](#)



What We Have Learned About Health in the Last Decade? Brain Tumor Treatment Can be Personalized Thanks to Genetics.

[Read More >>](#)



Join Smilow Cancer Hospital on Facebook

sharing their findings through social media by following our @YaleCancer twitter account.

[ASH Presentations >>](#)

[SABCS Presentations >>](#)

ESAB Site Visit

Our External Scientific Advisory Board met on November 21-22 to review summary presentations from our 7 research programs, global oncology, clinical research, community outreach, and our shared resources. Their annual feedback is essential to helping us to continually improve our programmatic structure and alignment for our Cancer Center Support Grant (CCSG), and I am thankful for their honest and helpful critique and guidance.

I would like to thank the leadership of our programs for their outstanding preparation in advance of the meeting and exceptional presentations. The depth of our Center was well conveyed and our vision to expand the impact of our clinical, outreach, research, and educational programs throughout our Center was evident. Special thanks to Robert Garofalo, PhD, and his team in the Office of Research Affairs: Christine Holmberg, Ashley McCaherty, Christal Esposito, and Susan Silva, along with Anna Raso, Administrative Services Supervisor for Yale Cancer Center, for their detailed planning for the meeting.

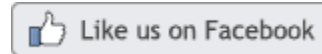
Holiday Party

I hope you and your family will join us to celebrate the holiday season at the annual Yale Cancer Center and Smilow Cancer Hospital holiday party on Thursday, December 12 at the Peabody Museum. Stop by anytime between 5:30-8:30 for food, music, and to wander through the museum with colleagues and friends.

[Party Details >>](#)

Notables

Debra Brandt, DO, Assistant Professor of Clinical Medicine (Medical Oncology) and Medical Director of the Smilow Cancer Hospital Care Center in Torrington, has been selected as one of 12 oncologists nationwide to participate in the 2020-2021 **ASCO Education Scholars Program**. The



Latest Posts:

Paul Kelly made the decision to support Yale Cancer Center philanthropically back in 1999. "I've been so pleased to be part of a place where the growth of advanced technologies in cancer control is a priority," he said. "It has been rewarding to see so many developments over the past 20 years; I know we'll see even more of them in the years ahead."

Mr. Kelly directs his annual contributions to the Yale Cancer Center Director's Fund, a crucial source of funding for the Center's top priorities. Learn how you can help support Smilow Cancer Hospital and Yale Cancer Center on #GivingTuesday.



[Read More >>](#)

Dr. David Madoff recently joined us on Yale Cancer Answers to discuss interventional radiology strategies for the treatment of liver cancer. Tune in to hear more about the progress being made, and the new options for our patients at Smilow Cancer Hospital.

program provides learning science and leadership skills training to enhance ASCO's education offerings.

Caroline Johnson, PhD, Assistant Professor of Environmental Health Sciences and a member of Yale Cancer Center's Cancer Microbiology Research Program, received the **Metabolomics Association of North America 2019 Young Investigator Award** for excellence in metabolomics work by early-career scientists.

The **Lion Heart** grant committee met last week and reviewed the 2019 grant submissions, selecting to fund the following three projects:

Elucidating the role of the long coding RNA Pvt1 in Cancer. **Nadya Dimitrova, PhD**, Assistant Professor in the Department of Molecular, Cellular, and Developmental Biology

Exploring Complementary Insulin-Lowering Agents as Adjuvants to Chemotherapy. **Rachel Perry, PhD**, Assistant Professor in Medicine (Endocrinology) and Cellular & Molecular Physiology

Drug discovery with humanized bacteria identifies kinase muscle type 2 phosphorylation as potential target to treat highly aggressive metastatic breast cancer. **Jesse Rinehart, PhD**, Associate Professor of Cellular & Molecular Physiology

Employee Profile: Sandy Whalen-Lariviere



[Read More >>](#)

Meet a few members of our Smilow Cancer Hospital Care Center at North Haven team! Virginia Syombathy, APRN; Jeremy Kortmansky, MD; Kristen Hoxie, PA; and Armand Russo, MD.



[Read More >>](#)

A new clinical trial launched from Yale exemplifies innovation at every stage on the long journey, beginning with a breakthrough in the lab to an application in the clinic, with stops to pick up collaborators, funders, and institutional partners.

Learn how Dr. Ranjit Bindra and Dr. Asher Marks followed the biology to develop a new clinical trial for young adults, a population that's often overlooked in cancer research.



After spending 25 years volunteering as an EMT, Sandra "Sandy" Whalen-Lariviere, is up for any challenge. Following three years supporting the Department of Surgery, and two years supporting leadership in the Yale Cancer Center Clinical Trials Office (CTO), she was offered the opportunity to work as a Financial Assistant for the CTO. She hit the ground running and quickly learned to navigate WorkDay and familiarize herself with the various COA's (chart of accounts).



When an invoice is submitted in the system, Sandy reviews it to make sure the correct charging was applied, and that the appropriate back-up information is included. She aims to build relationships and work together with a department if there are any issues. In addition to her current role, Sandy has been called on to assist in the procurement, expense reporting, and accounts payable functions for several other sections of Yale Cancer Center, including Research Affairs, Public Affairs, YCC Administration, and Smilow Ambulatory Operations.

"My motto is to treat people the way you want to be treated. I let people know that I am here if they need anything and will work to fix any issues to make sure the process goes smoothly. You can't learn if you stay stagnant, and I like the variety this role offers me," said Sandy.

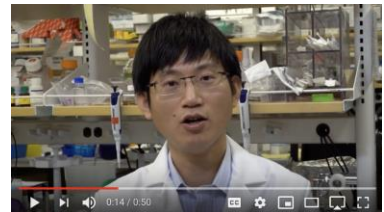
Michele Dingus, Finance Manager for Yale Cancer Center, recently found herself in need of extra support, and reached out to Sandy. She commented, "I cannot tell you how appreciative I am for all of Sandy's efforts. She has gone out of her way to become familiar with our COA as well as the grants within our section. I don't know what I would have done without her!"

Sandy's supervisor, Jeremy Rubenstein, Senior Accountant, commented, "Sandy has taken advantage of this opportunity

[Read More >>](#)

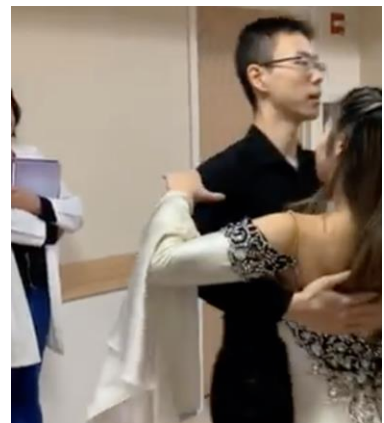
Watch Dr. Sidi Chen share his thoughts on the 10th anniversary of Smilow Cancer Hospital, and his research goals for the coming years. #Smilow10

"I hope we can erase the concern of patients and families so they live can in a world that they are no longer having a fear of cancer. I believe this is what motivates me for the next few decades. I want to make a difference for the world."



[Read More >>](#)

#Smilowcancerhospital at its's BEST!!! When a Hospice patient has one last request... to see ballroom dancers because she used to be one...Smilow delivers!! Many thanks to the Yale University dancers



[Read More >>](#)

The employees of The Hartford Insurance Company

[assisting other YCC sections] to not only excel in the position for which she was hired, but to also gain a deeper understanding of the financial operations of the Cancer Center as a whole. She is an asset to the CTO Financials group and an amazing member of the Cancer Center team."

YCC #OOTBThanks



YCC #OUTOFTHEBLUETHANKS recently recognized the following employees from the Clinical Trials Office: **Matthew Piscatelli**, Clinical Trials Team Manager; **Rebecca Lilian**, Assistant Director Clinical & Translational Research; **Karen Forman**, Assistant Director for Clinical Trial Operations; **Allison Bohren**, Assistant Director, Regulatory Affairs; **Jacqueline Hoyt**, Regulatory Manager; **Jessica Goepfert**, Clinical Trials Team Manager; **Carl Brown**, Clinical Trials Team Manager; **Kathleen Uscinski**, Associate Director, Care Centers.

This team was commended for their incredible contribution during a recent FDA audit. Without their tireless effort, which included coming in on the weekend, working long hours during the week, and attending to a myriad of details, the audit would not have been as successful. Thank you, CTO Team-your continuous hard work in the clinical trial setting is very much appreciated!

Yale Cancer Center's #OOTBTHANKS program is a staff recognition initiative to show appreciation to employees who have exemplified an above-and-beyond effort or an outstanding contribution to the team. All nominations should be submitted to the Director's Office c/o [Anna Raso](#).


created Chemo Care Packages for recently diagnosed patients who will be undergoing chemotherapy as part of their treatment plan. Representatives from the company stopped by the Breast Center at Smilow to drop off the comfort packages to very grateful Breast Center staff members. Thank you for your incredible support!





[Read More >>](#)

Follow Yale Cancer Center on Twitter

Follow us on [twitter](#)

 A new study in [@JAMAsurgery](#) by Dr. John Kunstman reported by [@MedPageToday](#) shows outcome disparities disappear in black patients with [#pancreaticcancer](#) when clinical variables are controlled for.

 Yale scientists build an automated algorithm to assess and score prognosis using TILs in [#melanoma](#). Led by [@RimmPathology](#), the findings could spare patients treatment and toxicities.

 Thank you to [@MarkGerstein](#) for discussing [#cancerogenomics](#) and [@yegracechen](#) talking about

Recent Publications

An open source automated tumor infiltrating lymphocyte algorithm for prognosis in melanoma.

Acs B, Ahmed FS, Gupta S, Fai Wong P, Gartrell RD, Sarin Pradhan J, Rizk EM, Gould Rothberg B, Saenger YM, Rimm DL. Nat Commun. 2019 Nov 29;10(1):5440.

[Read More >>](#)

Molecular Pathway Analysis Indicates a Distinct Metabolic Phenotype in Women With Right-Sided Colon Cancer.

Sun Y, Mironova V, Chen Y, Lundh EPF, Zhang Q, Cai Y, Vasiliou V, Zhang Y, Garcia-Milian R, Khan SA, Johnson CH. Transl Oncol. 2019 Nov 21;13(1):42-56.

[Read More >>](#)

Income disparities in needle biopsy patients prior to breast cancer surgery across physician peer groups.

Killelea BK, Herrin J, Soulos PR, Pollack CE, Forman HP, Yu J, Xu X, Tannenbaum S, Wang SY, Gross CP. Breast Cancer. 2019 Dec 2.

[Read More >>](#)

Homeobox protein Hhex negatively regulates Treg cells by inhibiting Foxp3 expression and function.

Jang SW, Hwang SS, Kim HS, Kim MK, Lee WH, Hwang SU, Gwak J, Yew SK, Flavell RA, Lee GR. Proc Natl Acad Sci U S A. 2019 Dec 2.

[Read More >>](#)

Type 3 inositol 1,4,5-trisphosphate receptor: A calcium channel for all seasons.

Mangla A, Guerra MT, Nathanson MH. Cell Calcium. 2019 Nov 25;85:102132.

[Read More >>](#)


Exploring Microsatellite Instability (MSI) in Colorectal Cancer at Elevated Microsatellite Alterations at Selected Tetranucleotides (EMAST).


Kurbatov V, Khan SA. Ann Surg Oncol. 2019 Dec 1.


[Read More >>](#)

Peer influence on physician use of shorter course external beam radiation therapy for patients with breast cancer.

Circular RNA Immunity for today's Grand Rounds.

 @dcmadoff will join us on Yale Cancer Answers today at 7:30pm on @wnpr to discuss interventional radiology strategies for the treatment of #livercancer. Tune in to hear more about the new options for our patients @SmilowCancer

 We're proud to announce @CoC_ACS has granted a three-year accreditation with commendation to @SmilowCancer. Hospitals must meet rigorous quality care standards and maintain excellent patient-centered care for accreditation.

 We welcome our External Scientific Advisory Board (ESAB) to campus for their annual review of our Research Programs, Translational Science, Shared Resources, and institutional support of cancer research

Calendar

Blavatnik Fund for Innovation at Yale

December 6; 8:00 AM

100 College Street

Yale Lifesciences Pitchfest

[Learn More >>](#)

Yale Cancer Answers

December 8; 7:30 PM

WNPR

Treatment Advances for Pancreatic Cancers

Jill Lacy, MD

[Learn More >>](#)

Yu JB, Pollack CE, Herrin J, Soulos PR, Zhu W, Xu X, Gross CP.
Pract Radiat Oncol. 2019 Nov 27.

[Read More >>](#)

Prevention of chemotherapy-induced peripheral neuropathy: A review of recent findings.

Ibrahim EY, Ehrlich BE.

Crit Rev Oncol Hematol. 2019 Nov 13;145:102831.

[Read More >>](#)

Patterns of Symptom Management Medication Receipt at End-of-Life Among Medicare Beneficiaries with Lung Cancer.

Saphire M, Prsic E, Canavan ME, Wang S, Presley CJ, Davidoff AJ.

J Pain Symptom Manage. 2019 Nov 25.

[Read More >>](#)

Imaging biomarkers for brain metastases: more than meets the eye.

Aneja S, Omuro A.

Neuro Oncol. 2019 Nov 28.

[Read More >>](#)

Key Factors in Clinical Protocols for Adoptive Cell Therapy in Melanoma.

Considine B, Hurwitz ME.

Methods Mol Biol. 2020;2097:309-327.

[Read More >>](#)

Functional Analysis of Human Hematopoietic Stem Cells In Vivo in Humanized Mice.

Song Y, Gbyli R, Fu X, Halene S.

Methods Mol Biol. 2020;2097:273-289.

[Read More >>](#)

T Cell Reprogramming Against Cancer.

Katz SG, Rabinovich PM.

Methods Mol Biol. 2020;2097:3-44.

[Read More >>](#)

Clinical characteristics and treatment-associated survival of head and neck Ewing sarcoma.

Torabi SJ, Izreig S, Kasle DA, Benchetrit L, Salehi PP, Judson BL.

Laryngoscope. 2019 Nov 27.

Radiobiology and Radiotherapy Research Program

December 9; 11:00 AM

Sterling Hall of Medicine, I-304

Relevant Heterogeneity in Mismatch Repair Deficient Tumors

Rosa Munoz Xicola, PhD

[Learn More >>](#)

Yale Cancer Center Grand Rounds

December 10; 12:00 PM

55 Park Street, Park Street Auditorium

Liver Regeneration Strategies in Interventional Oncology: Portal Vein Embolization and Beyond and A Feature of Leukemia Cell-of-Origin

David C. Madoff, MD, FSIR, FACR, FCIRSE and Shangqin Guo, PhD

[Learn More >>](#)

Cancer Biology Meeting

December 11; 4:00 PM

Brady Memorial Laboratory, BML 137

[Learn More >>](#)

Surgical Research Seminars

December 11; 4:00 PM

Brady Memorial Laboratory

Investigating Anti-cancer Immune Responses in Animal Models and Patients

Nikhil Joshi, PhD

[Learn More >>](#)

2019/2020 Immunobiology Seminar Series

December 12; 10:30 AM

The Anlyan Center Auditorium, N-107

The Relationship between a-synuclein-specific T cell Reactivity and PD Clinical Onset

[Read More >>](#)

Prostatic Artery Embolization Using 100-300- μ m Trisacryl Gelatin Microspheres to Treat Lower Urinary Tract Symptoms Attributable to Benign Prostatic Hyperplasia: A Single-Center Outcomes Analysis with Medium-Term Follow-up.

Ayyagari R, Powell T, Staib L, Chapiro J, Raja A, Bhatia S, Chai T, Schoenberger S, Devito R.

J Vasc Interv Radiol. 2019 Nov 23.

[Read More >>](#)

PLEKHA5 regulates tumor growth in metastatic melanoma.

Zhang H, Zhu H, Deng G, Zito CR, Oria VO, Rane CK, Zhang S, Weiss SA, Tran T, Adeniran A, Zhang F, Zhou J, Kluger Y, Bosenberg MW, Kluger HM, Jilaveanu LB.

Cancer. 2019 Nov 26

[Read More >>](#)

The Emerging Roles of ATP-Dependent Chromatin Remodeling Complexes in Pancreatic Cancer.

Hasan N, Ahuja N.

Cancers (Basel). 2019 Nov 25;11(12).

[Read More >>](#)

Locoregional Therapy, Immunotherapy and the Combination in Hepatocellular Carcinoma: Future Directions.

Dendy MS, Ludwig JM, Stein SM, Kim HS.

Liver Cancer. 2019 Oct;8(5):326-340.

[Read More >>](#)

The golden age for patients in their golden years: The progressive upheaval of age and the treatment of newly-diagnosed acute myeloid leukemia.

Shallis RM, Boddu PC, Bewersdorf JP, Zeidan AM.

Blood Rev. 2019 Nov 8:100639.

[Read More >>](#)

Funding Opportunities

Breast Cancer Alliance Breast Surgery Fellowship Grant

The mission of the BCA is to improve survival rates and quality of life for those impacted by breast cancer through better prevention, early detection, treatment and cure. To

Alessandro Sette, Dr. Biol. Sci.

[Learn More >>](#)

Pathology Grand Rounds

December 12; 12:30 PM

Fitkin Memorial Pavilion
Auditorium, LMP 1094

Mediator and the Regulation of Post-Initiation Events in Transcription

Joan W. Conaway

[Learn More >>](#)

Pharmacology Seminar Series

December 12; 12:30 PM

Brady Memorial Laboratory

Scaffold-mediated control of competing kinase reactions in the Wnt signaling network

Jesse Zalatan, PhD

[Learn More >>](#)

Cancer Genetics and Prevention Seminar

December 12; 2:30 PM

Orchard Medical Center, 107-109

[Learn More >>](#)

Yale Cancer Center and Smilow Cancer Hospital 2019 Holiday Party

December 12; 5:30 PM

Peabody Museum

[Learn More >>](#)

Hematology Research Seminar Series

December 13; 11:45 AM

Brady Auditorium

Real World Allogeneic Stem Cell Transplant Updates: Yale Collaborative Pursuits to Improve its Success

Lohith Gowda, MD, MRCP

[Learn More >>](#)

promote these goals, we invest in innovative research, breast surgery fellowships, regional education, dignified support and screening for the underserved.

Application Deadline: December 10, 2019

[Learn More >>](#)

Cancer Intervention and Surveillance Modeling Network (CISNET) (U01)

This FOA invites multiple PD/PI applications for collaborative research projects using simulation and other modeling techniques for specific cancer types.

Application Deadline: December 10, 2019

[Learn More >>](#)

Alex's Lemonade Stand (Childhood Cancer) Young Investigator Award

This grant is designed to support scientists during their fellowship training or early in their research careers. Demonstration of outstanding mentorship and demonstration of a career plan that shows commitment to pediatric cancer investigation are critical components of a successful application.

Application Deadline: December 16, 2019

[Learn More >>](#)

Alex's Lemonade Stand (Childhood Cancer) Epidemiology Grant

Epidemiology awards will support investigators pursuing research studies in human populations using epidemiological approaches, in order to significantly contribute to the understanding of childhood cancers.

Application Deadline: December 16, 2019

[Learn More >>](#)

Informatics Technology for Cancer Research Education Center (UE5)

The overarching goal of this NCI UE5 program is to support educational activities that complement and/or enhance the training of a workforce to meet the nation's biomedical, behavioral and clinical research needs.

Application Deadline: December 19, 2019

[Learn More >>](#)

Yale Medical Symphony Orchestra Winter Concert 2019

December 13; 7:30 PM

M.S. Harkness Memorial Auditorium

[Learn More >>](#)

Yale Cancer Answers

December 15; 7:30 PM

WNPR

FDA Breast Implant Recall

Tomer Avraham, MD

[Learn More >>](#)

Genetics Clinical Grand Rounds

December 17; 10:15 AM

Sterling Hall of Medicine, I-304

James McGrath, MD, PhD

[Learn More >>](#)

Genetics Department Seminar Series

December 17; 11:30 AM

The Anlyan Center Auditorium, N-107

Adrian Krainer, Ph

[Learn More >>](#)

Schwartz Center Rounds

December 17; 12:00 PM

55 Park Street, Park Street Auditorium

A Day in the Life

Tara Sanft, MD and Stacey Stein, MD

[Learn More >>](#)

Pathology Grand Rounds

December 19; 12:30 PM

Fitkin Memorial Pavilion Auditorium, LMP 1094

Computational Pathology and Next-generation Histology: Implementation of Digital

Yale Cancer Center K12 Calabresi Immuno-Oncology Training Program Scholar Awards

We are pleased to solicit applications for the Yale Cancer Center (YCC) K12 Calabresi Immuno-Oncology Training Program (IOTP) Scholar Award for junior faculty to enhance research skills beyond the training provided during graduate and postgraduate training.

Application Deadline: January 3, 2020

[Application Instructions >>](#)

[Learn More >>](#)

2020 Mary Kay Foundation Cancer Research Grant

The Mary Kay Foundation, a funding source for cancer research, is currently accepting applications for innovative grants for translational research in ovarian, uterine, breast, or cervical cancer. Only one grant application will be accepted from each invited cancer research institute or medical school.

Internal Application Deadline: January 5, 2020

Funding Organization's Deadline: February 7, 2020

[Learn More >>](#)

2020 Yale Cancer Center Team Challenge Award

YCC is pleased to announce the 2020 Team Challenge Award, a new internal grant program focused on advancing the work of teams who seek to address a fundamental research priority that aligns and/or has the potential to successfully extend YCC strategic priorities.

Internal LOI Deadline: February 3, 2020

Internal Application Deadline: April 1, 2020

[Learn More >>](#)

Pathology for Diagnosis and Research

David Klimstra, MD

[Learn More >>](#)

Cancer Genetics and Prevention Seminar

December 19; 2:30 PM

Orchard Medical Center, 107-109

Serous Uterine Cancer and BRCA1 Mutations and Genetics and Male Breast Cancer

Elizabeth Del Buono, MS, LCGC and Alexandra McClellan, MS, LCGC

[Learn More >>](#)

Submissions

Please submit your recent publication and grant announcements to:

Renee Gaudette

Director, Public Affairs and Communications