

January 9, 2015

Announcements

Madhav Dhodapkar Joins Leadership of Cancer Immunology

I am delighted to announce that Madhav Dhodapkar, MBBS, Chief of Hematology and the Arthur H. Bunker and Isabel Bunker Professor of Medicine, has been appointed to Co-Lead the Cancer Immunology Research Program along with Dr. Lieping Chen. Madhav's leadership and research expertise will be an excellent addition to our Cancer Center research program team, and his focus on the biology of the immune system, and how it interacts with tumor growth, specifically in multiple myeloma, will complement the goals set in place for the Cancer Immunology Program.



I would like to thank Dr. Warren Shlomchik for his steadfast leadership of the Cancer Immunology Program over the last 14 years. Warren is preparing for a new challenge at the University of Pittsburgh Cancer Center and will join their research team this spring.

Ben Judson Appointed Medical Director for Ambulatory Clinics

I am pleased to announce the appointment of Ben Judson, MD, as the new Medical Director for Ambulatory Clinics at Smilow Cancer Hospital. Ben is an accomplished physician and administrator who brings an innovative approach to the Ambulatory Clinic redesign effort. He has a deep understanding of the complexities of ambulatory practice, and a unique ability to connect to physicians and foster an atmosphere that optimizes efficiency and good quality care. Ben will work



from the desk of

Thomas J. Lynch, Jr., MD

Director, Yale Cancer Center
Physician-in-Chief Smilow Cancer
Hospital at Yale-New Haven



Recent News

Read recent articles featuring experts from Yale Cancer Center
[News Center >>](#)

LATEST ARTICLES:



E-Cigarettes: Turning Harm Reduction Into Harm Addiction?
[Read More >>](#)



closely with the administrative and nursing leadership of all of the Smilow clinics to optimize provider and patient experience.

Genomics Committee Update

Yale Cancer Center has been a leader in genomic tumor profiling for several years. Yale faculty members have made many of the seminal contributions to the field of cancer biology. At the clinical level, the Personalized Medicine Tumor Board at Smilow Cancer Hospital provides patients with an individualized approach to their cancer care. The availability of tumor profiling enhances our researchers' ability to develop a robust drug discovery portfolio.

To further expand the scientific and clinical leadership of our Cancer Program, at the request of the Dean's office, under the supervision of Drs. Paul Taheri and Carolyn Slayman, representatives from Smilow Cancer Hospital, Yale School of Medicine, and the Yale Cancer for Genome Analysis have recently come together to optimize the services for tumor profiling across the organization. Chaired by Dr. Rogerio Lilenbaum, the committee includes Dr. David Rimm, Dr. Richard Lifton, Dr. Roy Herbst, Dr. Madhav Dhodapkar, Dr. Murat Gunel, Mr. Richard Lisitano, and Mr. Andrew Golus.

The committee will meet on a monthly basis and report their findings to the faculty at periodic intervals. We expect to finalize the project by the summer of 2015 and invite suggestions from all interested parties. Please send suggestions to [Rogerio Lilenbaum](#).

New Twitter Feed @InsideYCC

We are happy to announce a new communication tool for the Cancer Community at Yale. Our new Twitter feed, [Inside YCC](#), is a place for YCC Members and the community to share Member news, events, announcements, publications, FOAs, and other items of interest. Check it out, follow it, share it with colleagues, and definitely email me any news or announcements you think might be helpful to our community, especially if it pertains to encouraging collaboration amongst our Members.

SCH Named VHL/RCC Comprehensive Clinical Care Center

Smilow Cancer Hospital is now a VHL/RCC (von Hippel-Lindau/renal cell carcinoma) Comprehensive Clinical Care Center. Smilow is one of the very few centers nationally that has been given the designation as a "Comprehensive Clinical Care center." It shows the strength of the collaboration of clinicians willing to care for complex patients with hereditary cancer syndromes.

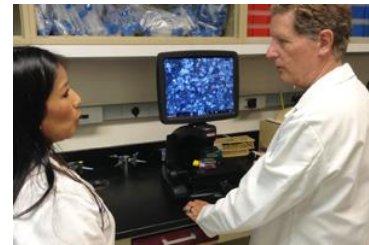
AACR, ASCO recommend regulation of e-cigarettes, other electronic nicotine delivery systems

[Read More >>](#)



Discovering the PD-1 Checkpoint: Winners of the 2014 William B. Coley Award for Tumor Immunology

[Read More >>](#)



A Bed Of Mouse Cells Helps Human Cells Thrive In The Lab


[Read More >>](#)

Follow Yale Cancer Center on Twitter

Follow us on [twitter](#)

LATEST TWEETS:

 National experts call on FDA to regulate e-cigarettes
<http://bit.ly/1BLhj93> @aacr @ASCO @DrRoyHerbstYale

 E-cigs no tool for quitting smoking and should not be marketed to teens, experts say in new policy statement
<http://bit.ly/1BLhj93>

Reminder to RSVP for Smilow 5th Anniversary Celebration

All caregivers and staff from Smilow Cancer Hospital and our Care Centers are invited to join us in a celebration of "Patient and Family Centered Care" and "the Best Doctors and Nurses" on Friday, January 30 at 5:30 PM at the Omni Hotel in New Haven. Reservations are required and the deadline to RSVP is Wednesday, January 14. Please contact [Alaine Nellis](#) to confirm your attendance. [Learn More >>](#)


Notables


The **National Cancer Institute** has awarded **Don Nguyen, PhD**, Assistant Professor of Pathology and a member of the Signal Transduction Research Program, a 5-year R01 grant (\$1,724,760 total), to study the role of metabolic stress in lung cancer metastasis. This project will be performed in collaboration with Gary Cline and Qin Yan. The title of the grant is "A novel lineage pathway controls metabolic adaptation by metastatic lung cancers."


Please welcome **Kurt Schalper, MD, PhD** in his new role as Head of the Translational Immuno-Oncology Laboratory. Many of you may already know Kurt from his work with Dr. David Rimm looking at novel correlative measures in cancer. In his new role, Kurt will lead efforts to enhance immune profiling within Smilow Cancer Hospital and Yale Cancer Center to promote translational research and to develop new predictive biomarkers to help personalize immunotherapy. "Following up on our successful T-TARE program we realized that we have incredible immuno-oncology programs across multiple tumor types. To continue to promote translational research and future investigator initiated trials we felt bolstering this core support was key to the strategic mission of our cancer center," said Roy S. Herbst, MD, PhD, Associate Director for Translational Research. Kurt's office is in SHM-I234C and he can be reached at (203) 785-4719.


Congratulations to **Abhijit Patel, MD, PhD**, Assistant Professor of Therapeutic Radiology and a member of the Radiobiology and Radiotherapy Program. Dr. Patel has received a \$200K grant from the **Brozman Foundation** to study "Ultrasensitive detection of tumor DNA in blood for early diagnosis of ovarian cancer."


The annual **Lion Heart Grants for Breast Cancer Research**

 Using a malaria drug to treat cervical cancer? Yes! <http://n.pr/1xRI64h> @YaleMed Yale's Dr. David Rimm is growing cell lines.

 Liepeng Chen and other Coley Award winners discuss #immunotherapy as a breakthrough for #Cancer <http://bit.ly/1xS9rVZ> @CancerResearch

 MT: Please don't ignore important health messages. Cancer's Random Assault <http://nyti.ms/1xw1NyH>

 Exercise reduces AI-induced arthralgia in #breastcancer survivors. Journal of Clinical Oncology <http://bit.ly/1BBFBIN> @ASCOPost @YaleSPH

 The new year is a great time for lifestyle changes that will improve many parts of your life & could help prevent cancer. How can we help?

Join Yale Cancer Center on Facebook

Like us on Facebook 

LATEST POSTS:

Congratulations Dr. W. Mark Saltzman on your election to the Institute of Medicine, one of the most prestigious bodies in health and medicine! Dr. Saltzman is the Goizueta Foundation Professor of Chemical & Biomedical Engineering at the School of Medicine and has made significant breakthroughs in translational cancer research to promote new methods for drug delivery.

were awarded to three Yale Cancer Center investigators for 2015:

Donald Engelman, PhD: *Targeting Chemotherapy in Breast Cancer: Weakly-acidic prodrugs bias drug uptake toward tumors*

Vikram Wali, PhD: *Exploiting Metabolic Isoenzyme Shifts in Breast Cancer to Discover Novel Therapies*

Vikram Wali, PhD and **Chistos Hatzis, PhD:** *Evaluation of New Treatment Strategy for Triple Negative Breast Cancer Involving Combinations of Cancer Stem Cell Specific Drugs and Standard Chemotherapy*

Roy Herbst will present **Best of 2014 Lung Cancer Research and High Priority NCI Lung Cancer Trials** on January 20 at 9:00 PM in collaboration with the **International Association for the Study of Lung Cancer**.

[Learn More >>](#)

At the Annual **American Society of Hematology** Conference in December, the following students received abstract achievement awards: **Linette Bosques, Amalyah Figueroa, Chad Sanada, Alexandra Teixeira, Siying Zou, Shiny Nair,** and **Roger Kim**.

Congratulations to the following investigators who received **American Cancer Society Institutional Research Grants:**

Sarah Ann Slavoff, PhD

Department of Chemistry

A chemical proteomic pipeline to profile the internal ribosome entry site-controlled proteome in normal and cancerous human cells

Jaehyuk Choi, MD, PhD

Department of Dermatology

Investigation of the functional impact and targetability of novel CD28 mutations in cutaneous T cell lymphoma

Julien Berro, PhD

Department of MB&B

Role of actin filament crosslinking proteins during clathrin-mediated endocytosis

Nicole C. Deziel, PhD

Department of Environmental Health Sciences, YSPH

Exposure to halogenated aromatic compounds and risk of thyroid cancer

Sarah S. Mougalian, MD

Department of Medicine (Medical Oncology)

Breast cancer endocrine therapy adherence: the BETA pilot

Several members of the YNH and SCH team presented at the **Institute for Healthcare Improvement** conference last month. Here is a summary of the presentations:



[Read](#)

[More >>](#)

In his storied career over the past 50 years, Dr. Vincent DeVita, the Amy and Joseph Perella Professor of Medicine and former Director of Yale Cancer Center, has changed the way that physicians around the globe treat cancer. Since his first breakthrough published in 1967, Dr. DeVita has developed groundbreaking treatments for both Hodgkin's lymphoma and breast cancer, published more than 400 scientific papers, led the [National Cancer Institute](#) for nearly a decade, and served as volunteer President of the [American Cancer Society](#).



[Read](#)

[More >>](#)

When initially treated for his lung cancer, chemotherapy made Bob Carlson feel miserable; as chemotherapy affects every cell in the body - including cancerous cells - he suffered from diarrhea, hearing loss, and nausea. Thanks to a new immunotherapy treatment in clinical trial at Smilow Cancer Hospital, however, Bob no longer suffers from such devastating side effects.

According to his oncologist, Dr. Roy Herbst, Chief of Medical Oncology at Yale Cancer Center and Smilow Cancer Hospital, Bob's new treatment works by inhibiting a protein, PD-L1, which blocks the immune system from attacking

Presentations:

Reducing Quality Variation to Lower Costs
Dr. Ryan O'Connell and Steve Allegretto

Storyboards:

A Comprehensive Cancer Center Disease Team Performance Dashboard

Salimah Velji, MPH, Naralys Sinanis, MPH, Catherine Lyons, RN, MS, Sonia Grizzle, BA, Adam Roshka, MBA, Rogerio Lilenbaum, MD

Working to Keep Vulnerable Elders from Being Readmitted to the Hospital

Grace Jenq, MD, Beverly M. Belton, MSN, RN, Margaret Doyle, Ronald Gibson, Ted Surh, Kimberly Leak, BS, Lynn Triebel, BSN, RN, Ruth Ellen Clarke, BSN, RN, Carolyn Gillespie, BSN, RN, Leora Horwitz, MD

Transforming Patient Care Through Direct Provider Observations and Workflow Redesign

Sandra Bacon, RN, MSN; Thomas Balcezak, MD; Carol Barsky, MD, MBA; Crystal Clemons, MPH; Ohm Deshpande, MD; Maribeth Hayes, RN, MS; Grace Jenq, MD; Ian Schwartz, MD

Patient Identification: Who Are You?

Allison Clark, et al.

Eye in the Sky: Improving patient outcomes and best practice compliance through ICU tele-monitoring

Tom Balcezak, MD, Carla Carusone, RN, Tim Cooney, Roger Elias, MD, Ed Fisher, Michael Franco, MD, Jennifer Ghidini, APRN, Tony Grasso, Evan Jackson, Meredith Johnson, David Kaufman, MD, Rebecca Lofthouse, RN, Peter Marshall, MD, Steve Miklos, Lenore Reilly, RN, Jonathan Siner, MD

Research in the News

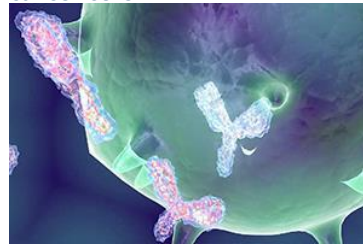
New class of synthetic molecules mimics antibodies

A Yale University lab has crafted the first synthetic molecules that have both the targeting and response functions of antibodies.

The new molecules - synthetic antibody mimics (SyAMs) - attach themselves simultaneously to disease cells and disease-fighting cells. The result is a highly targeted immune response, similar to the action of natural human antibodies.

"Unlike antibodies, however, our molecules are synthetic organic compounds that are approximately one-twentieth the

cancer cells.



[Read](#)

[More >>](#)

"As I watched Dr. Sanjay Gupta interview doctors, researchers and two patients at Yale-New Haven Medical Center/Smilow Cancer Center, I decided, then and there, that I wanted to be in a research trial." Read about Ms. Sandlaufer's decision to participate in a clinical trial after learning about immunotherapy research and clinical trials from Yale Cancer Center in a segment on CNN.



[Read](#)

[More >>](#)

Closer to Free

closer to free

The fund to advance cancer research and enhance patient care

Events

January 9; 12PM
YCC Research in Progress Meeting

NP4-101A

New Approaches to the Treatment of Advanced Bladder Cancer

Daniel Petrylak, MD

size of antibodies," said David A. Spiegel, a professor of chemistry at Yale whose lab developed the molecules. "They are unlikely to cause unwanted immune reactions due to their structure, are thermally stable, and have the potential to be administered orally, just like traditional, small-molecule drugs."

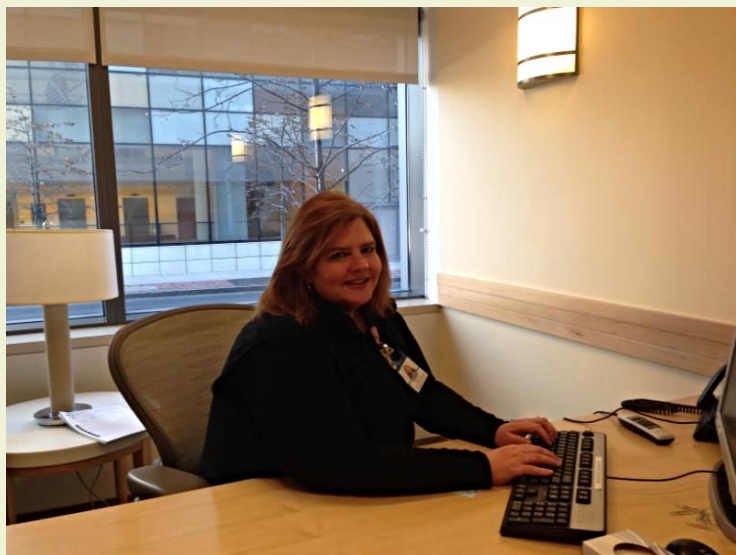
[Read More >>](#)

Cancer and Tobacco Experts Not Fired Up about E-Cigarettes for Quitting Smoking

Despite overwhelming evidence linking cigarettes to serious diseases like cancer, leading experts in cancer research and tobacco policy are not ready to recommend electronic nicotine delivery systems (ENDS), like e-cigarettes, as a safe way to quit smoking. E-cigarettes remain unregulated by the FDA, pose health hazards, and should not be marketed to people younger than 18, according to [a national policy statement](#) published Jan. 8 in two prominent cancer journals, *Clinical Cancer Research* and the *Journal of Clinical Oncology*.

[Read More >>](#)

Employee Profile: Donna Lapolt



Donna Lapolt, PCA has been working in the Breast Center at Smilow Cancer Hospital since 2011 in the outpatient clinic. She brought with her an extensive background in clinical and administrative medical assisting in both primary care and family health practices. As a Breast Medical Oncology PCA, Donna works with physicians and nurse practitioners to provide continuity of care to patients.

Donna greets patients when they first arrive, obtains vitals, and makes sure they are settled. Many of these patients are beginning chemotherapy or anxiously awaiting pathology or

[Read More >> \(PDF\)](#)

January 11; 6PM Yale Cancer Center Answers

WNPR
Bereavement Services
Bonnie Indeck, LCSW and Andrea Lucibello, LCSW

[Read More >>](#)

January 12; 12PM YSPH Biostatistics Seminar

LEPH 216
Understanding Racial / Ethnic Disparities in Cancer Survival: A Counterfactual Approach for Conceptual and Missing Data Issues
Linda Valeri, PhD

[Read More >> \(PDF\)](#)

January 12; 3PM Signal Transduction Research Program Seminar

SHM I-116
The Interplay Between Aldehyde Dehydrogenases and Signal Transduction in Cancer Stem Cells
Vasilis Vasiliou, PhD

[Read More >>](#)

January 13; 9:30AM Pathology Research in Progress Talks

TAC N-107
Changes in Melanoma Morphology and Glucose Uptake with BRAF Inhibitor Treatment
Nicholas Theodosakis
Histone Demethylases in Alternative Polyadenylation
Lauren Blair, PhD

[Read More >> \(PDF\)](#)

January 13; 12:00 PM Yale Cancer Center Grand Rounds

Park Street Auditorium
Orienteering in the Labyrinth of Myelodysplasia Syndromes
Valeria Santini, MD

[Read More >> \(PDF\)](#)

January 13; 5:00 PM YNHH Transforming Healthcare Grand Rounds

Fitkin Amphitheater, LMP 1094
Using Data About Patient Experiences

radiology testing results to see if their treatment is working, or if their cancer is progressing. Others may be there for routine follow-up and are years out from their diagnosis. No matter the reason, Donna is there to make sure everything runs smoothly and that patients are as comfortable as possible.

"Friday clinic may be my favorite day of the week," said Donna. "This is the day I work with Dr. Erin Hofstatter and Shawn Polizzi, APRN in the Breast Cancer Prevention Clinic. We meet with women who are at risk for developing breast cancer due to a genetic mutation or a family history of breast cancer, or a personal history of benign breast disease." Donna commented that the clinic focuses on developing an individualized plan for each patient tailored to their needs with recommendations for imaging, genetic counseling and or testing, possible preventative medication and referrals to other specialties for screenings that would help identify cancer as early as possible.

After meeting with Donna, patients leave their appointment with the Breast Cancer Prevention Clinic with all of their recommended appointments in place and she coordinates any necessary follow-up for them. Dr. Hofstatter, Assistant Professor of Medicine (Medical Oncology), commented, "Donna has always gone above and beyond in every aspect of her work. She is wonderful with patients, she is a thoughtful and active contributor to the clinic, and she is my "go-to, get-it-done" person who is essential in keeping the clinic running smoothly. I can honestly say I am a better doctor to my patients because of Donna's help."

New Members

One of Walther Mothes' first acts as Co-Leader for Molecular Virology was to recruit Andy Goodman and Martin Kriegel to lead the program's new branch of research. Dr. Mothes wants Molecular Virology to broaden its scope from studying only human tumor viruses to studying all infectious causes of human cancer including bacteria and the microbiome.



[Andrew Goodman, PhD](#), Assistant Professor of Microbial Pathogenesis, is a leading scientist of the microbiome, an area that affects multiple cancers including colon cancer. Dr. Goodman joins YCC with numerous awards under his belt including an NIH Director's New Innovator Award, Presidential award (PECASE), Pew Scholar, and YCCI Junior Faculty Scholar. In addition, he holds several NIH grants to study

to Help Transform Healthcare
Paul D. Cleary, PhD
[Read More >> \(PDF\)](#)

January 15; 12:00 PM
Yale Cancer Center / Schwartz Center Rounds
Park Street Auditorium
How Do We Get to the End?
Thomas Lynch, Jr., MD
[Read More >>](#)

January 15; 12:30 PM
Pathology Grand Rounds
Fitkin Amphitheatre, LMP 1094
DNA Repair and Cancer Etiology
Roger Greenberg, MD, PhD
[Read More >> \(PDF\)](#)

January 16; 12:00 PM
YCC Research in Progress Meeting
NP4-101A
Molecularly Targeted Therapy and Lung Cancer
David Carbone, MD, PhD
[Read More >>](#)

January 16; 1:00 PM
Developmental Therapeutics Research Program
SHM I-116
Nanotechnology For Systemic Drug Delivery to Brain Tumors
Jiangbing Zhou, PhD
[Read More >> \(PDF\)](#)

January 17; 7:00 PM
Thoracic Oncology Translational Research Fund Benefit
Woodwinds
Marrotolli Family Annual Gala
[Read More >>](#)

January 18; 6:00 PM
Yale Cancer Center Answers
WNPR
Exercise Interventions for Women with Cancer
Melinda Irwin, PhD, MPH
[Read More >>](#)

January 20; 9:30 AM
Pathology Research in Progress Talks
TAC N-107
TBA

various characteristics of the microbiome, and is a prolific publisher with papers in Cell, Science and PNAS.



[Martin Kriegel, MD, PhD](#), Assistant Professor of Immunobiology, a former Research Fellow under Richard Flavell from 2003-2006, returned to Yale in 2012 after completing a Residency and Rheumatology Fellowship under Diane Mathis and Christopher Benoist at Harvard Medical School studying the sex differences of gut commensals in autoimmunity. Dr. Kriegel's lab is currently studying the role of gut

commensals in systemic lupus erythematosus and the related antiphospholipid syndrome in human and mouse models. The goals are to identify chronic cross-reactive triggers within the microbiome and dissect host immune-commensal interactions involved in autoimmunity - relevant to YCC when applied to questions on cancer pathogenesis.

Funding and Award Opportunities

Avon Foundation for Women Breast Cancer Research Grants

Supports research projects aimed at understanding the causes of breast cancer, prevention or developing new tests to assess risk. Funds can also be requested to develop new treatments for unmet needs in breast cancer.

Letter of Intent Due: January 15, 2015

[Learn More >>](#)

2015 Sontag Foundation - Early Career Distinguished Scientist Award for Brain Cancer Research

Career development award supporting early career scientists with inspiring, potential-laden brain cancer proposals. The foundation is highly interested in researchers that may bring new perspectives to bear on the complex questions related to brain cancer.

Applicant's initial faculty appointment must have been no earlier than March 2012.

Up to \$600,000 over 4 years.

Application Deadline: March 19, 2015

[Learn More >>](#)

Recent Publications

Clinical utility of lenalidomide in the treatment of

Lan Shao, PhD
TBA
Kurt Schalper MD, PhD
[Read More >>](#)

January 20; 12:00 PM Yale Cancer Center Grand Rounds

Park Street Auditorium
Hormone - DNA repair crosstalk in prostate cancer: mechanisms and implications for therapeutic intervention
Karen E. Knudsen, PhD
[Read More >>](#)

January 22; 12:30 PM Pathology Grand Rounds

Fitkin Amphitheatre, LMP 1094
Origins and Significance of Intratumoral Genomic Heterogeneity in Human Colorectal Tumors
Darryl Shibata, MD
[Read More >> \(PDF\)](#)

January 23; 12:00 PM YCC Research in Progress Meeting

NP4-101A
TBA
Roy S. Herbst, MD, PhD
[Read More >>](#)

January 23; 1:00 PM Cancer in the LGBT Communities

Hope Building, Room 103
From Risk to Survivorship
Liz Margolies
[Read More >>](#)

Submissions

Please submit your recent publication and grant announcements to:

Renee Gaudette
Director, Public Affairs and Marketing
renee.gaudette@yale.edu

 [Forward to a Friend](#)

myelodysplastic syndromes.

Abou Zahr A, Saad Aldin E, Komrokji RS, Zeidan AM.
J Blood Med. 2014 Dec 22;6:1-16.

[Read More >>](#)

Growing Use of Mastectomy for Ductal Carcinoma-In Situ of the Breast Among Young Women in the United States.

Rutter CE, Park HS, Killelea BK, Evans SB.
Ann Surg Oncol. 2015 Jan 7.

[Read More >>](#)

Patient Cost Sharing and Receipt of Erythropoiesis-Stimulating Agents Through Medicare Part D.

Davidoff AJ, Hendrick FB, Zeidan AM, Baer MR, Stuart BC, Shenolikar RA, Gore SD.
J Oncol Pract. 2015 Jan 6.

[Read More >>](#)

Racial differences in three major NHL subtypes: Descriptive epidemiology.

Li Y, Wang Y, Wang Z, Yi D, Ma S.
Cancer Epidemiol. 2015 Jan 2.

[Read More >>](#)

Phase 1/2 study of orteronel (TAK-700), an investigational 17,20-lyase inhibitor, with docetaxel-prednisone in metastatic castration-resistant prostate cancer.

Petrylak DP, Gandhi JG, Clark WR, Heath E, Lin J, Oh WK, Agus DB, Carthon B, Moran S, Kong N, Suri A, Bargfrede M, Liu G.
Invest New Drugs. 2015 Jan 4.

[Read More >>](#)

Survival and low-grade glioma: the emergence of genetic information.

Claus EB, Walsh KM, Wiencke JK, Molinaro AM, Wiemels JL, Schildkraut JM, Bondy ML, Berger M, Jenkins R, Wrensch M.
Neurosurg Focus. 2015 Jan;38(1):E6.

[Read More >>](#)

Comparison of the expression of vimentin and actin in spitz nevi and spitzoid malignant melanomas.

Alomari AK, Klump V, Neumeister V, Ariyan S, Narayan D, Lazova R.
Am J Dermatopathol. 2015 Jan;37(1):46-51.

[Read More >>](#)

The Strength and Cooperativity of KIT Ectodomain Contacts Determine Normal Ligand-Dependent Stimulation or Oncogenic Activation in Cancer.

Reshetnyak AV, Opatowsky Y, Boggon TJ, Folta-Stogniew E, Tome F, Lax I, Schlessinger J.
Mol Cell. 2014 Dec 23.

[Read More >>](#)

Decision-making and cancer screening: A qualitative study of older adults with multiple chronic conditions.

Gross CP, Fried TR, Tinetti ME, Ross JS, Genao I, Hossain S, Wolf E, Lewis CL.
J Geriatr Oncol. 2014 Dec 17.

[Read More >>](#)

Assessment of National Practice for Palliative Radiation Therapy for Bone Metastases Suggests Marked Underutilization of Single-Fraction Regimens in the United States.

Rutter CE, Yu JB, Wilson LD, Park HS.
Int J Radiat Oncol Biol Phys. 2014 Dec 24.

[Read More >>](#)

Combination Therapy with Anti-CTLA-4 and Anti-PD-1 Leads to Distinct Immunologic Changes In Vivo.

Das R, Verma R, Sznol M, Boddupalli CS, Gettinger SN, Kluger H, Callahan M, Wolchok JD, Halaban R, Dhodapkar MV, Dhodapkar KM.
J Immunol. 2014 Dec 24.

[Read More >>](#)

Revisiting the sustainable growth rate "hole": sources of healthcare cost stabilization in 2010-2012.

Maroongroge S, Dosoretz AP, Kim SP, Gross CP, Yu JB.
Int J Radiat Oncol Biol Phys. 2014 Dec 1;90(5):983-5.

[Read More >>](#)

Hospital re-admission and 30-day mortality following surgery for oral cavity cancer: Analysis of 21,681 cases.

Luryi AL, Chen MM, Mehra S, Roman SA, Sosa JA, Judson BL.
Head Neck. 2014 Dec 23.

[Read More >>](#)

Impact of Adjuvant Treatment for Microscopic Residual Disease After Non-Small Cell Lung Cancer Surgery.

Hancock JG, Rosen JE, Antonicelli A, Moreno A, Kim AW, Detterbeck FC, Boffa DJ.
Ann Thorac Surg. 2014 Dec 17.

[Read More >>](#)

PD-L1 expression correlates with tumor-infiltrating lymphocytes and response to neoadjuvant chemotherapy in breast cancer.

Wimberly H, Brown JR, Schalper KA, Haack H, Silver MR, Nixon C, Bossuyt V, Puztai L, Lannin DR, Rimm DL. Cancer Immunol Res. 2014 Dec 19.

[Read More >>](#)