

March 4, 2016

Announcements

U.S. News Best Hospitals Voting Deadline TODAY

Today is the deadline for casting your vote for the *U.S. News & World Report* 2016 Best Hospitals rankings.

U.S. News & World Report's partnership with Doximity allows board certified physician members of the online social networking website to nominate up to five hospitals in their specific certified specialty for the Best Hospital's designation. Once you have registered through Doximity, you have the ability to vote in your specialty.

Please take the time to do this, and to recognize the great team that you're a part of each day at Smilow Cancer Hospital at Yale-New Haven and at our Care Centers.

[Vote Now >>](#)

Yale Cancer Center Welcomes New Development Staff

Yale Cancer Center is happy to welcome two new staff members to our development fundraising team, under the leadership of Julie Parr, Senior Director of Development.

Pamela Hartley will begin her position as a development technical writer on March 14. For twenty-five years, Pamela worked with Connecticut Innovations. She began her career at Connecticut Innovations in business development and was most recently the Senior Marketing Manager. Her experience designing and launching the content marketing effort for CI will be terrific background for helping our development department create and market content in the basic sciences that we can use for our prospect solicitations and stewardship reports. As a Yale undergraduate, she majored in biology. Pamela will

from the desk of

Peter G. Schulam, MD, PhD

Director, Yale Cancer Center
and Physician-in-Chief,
Smilow Cancer Hospital (Interim)

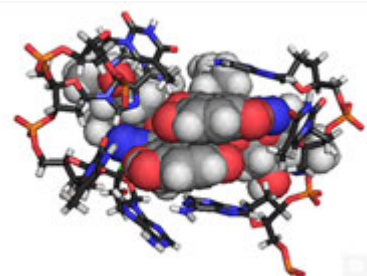


Recent News

Read recent articles featuring experts from Yale Cancer Center

[News Center >>](#)

LATEST ARTICLES:



Understanding the cancer-killing properties of a chemical commando

[Read More >>](#)

develop content for white papers, proposals, stewardship reports, and other written materials from the development office to support our efforts.

Next, **Tamiko Collier** will join us on March 29 as a major gifts officer for Yale Cancer Center. Tamiko help us develop a prospect pipeline for Yale Cancer Center, launching relationships with grateful patients and other people interested in cancer philanthropy. She will steward a pool of our leadership-giving donors, and will help with the advisory board and other YCC events. For the last nine years, Tamiko has been with New York Presbyterian Hospital as a major gift officer, staffing the urology and women's health service lines. She has worked closely with leadership annual giving donors, physicians, hospital directors and chairs, where she initiated relationships with grateful patients that have led to meaningful gifts in the \$500,000 to \$1 million range.

Notables

David Schatz, PhD, Professor of Immunobiology and of Molecular Biophysics and Biochemistry and a member of Yale Cancer Center's Cancer Immunology Program, has been named **Chairman of the Department of Immunobiology** at Yale School of Medicine. Dr. Schatz has made fundamental contributions to our understanding of the mechanisms that assemble and diversify the antigen receptor genes that encode antibodies and T cell receptors. He is best known for the discovery of RAG1 and RAG2, subsequent biochemical insights into RAG function and evolutionary origins, and important insights into the regulation of somatic hypermutation.

Smilow Cancer Hospital was well represented at the annual ASCO Quality meeting in Phoenix, AZ last week. Yale faculty presented the following abstracts:

An electronic intervention to improve structured cancer stage data capture.

Oral Abstract Session B: Practice of Quality

Kerin B. Adelson, Kim Framski, Patricia Lazette, Teresita Vega, Rogerio Lilenbaum

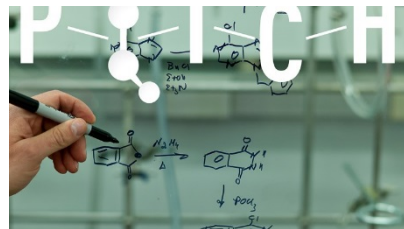
Multidisciplinary process improvement to optimize oral chemotherapy safety.

Poster Session A: Practice of Quality and Cost, Value, and Policy in Quality



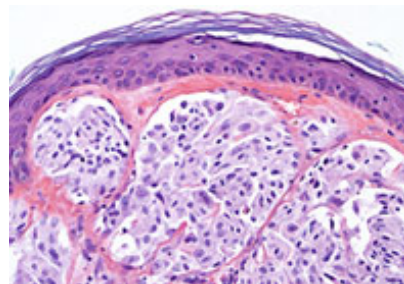
Kerin B. Adelson, MD, on Improving Cancer Staging

[Read More >>](#)



Yale-UConn partnership kick-starts biotech venture projects

[Read More >>](#)



Yale scientists identify gene that regulates the growth of melanoma

[Read More >>](#)

Kerin B. Adelson, Stephanie Buia Amport, Monica Fradkin, Renee Havriliak, Michelle Renee Harrison, Osama Abdelghany, Stephanie Kregling, Jessica Wright, Bret Morrow, Roberta Sterling, Mandeep Smith, Frank Esposito, Martha Stutsky, LeeAnn Miller, Rogerio Lilenbaum, Catherine A. Lyons, Anne C. Chiang, Howard Cohen

Understanding total cost of cancer care to determine strategic interventions to improve value.

Oral Abstract Session B Breakout 1: Cost, Value, and Policy in Quality

Kerin B. Adelson, Salimah Velji, Kavita Patel, Basit Chaudhry, Sonia Grizzle, Catherine A. Lyons, Rogerio Lilenbaum

Ambulatory redesign: Strategies for quality improvement in patient care.

Poster Session A: Practice of Quality and Cost, Value, and Policy in Quality

Naralys Estevez Sinanis, Catherine A. Lyons, Nancy Smith, Maureen McGlennon, Terri L. Parker, Carolyn Truini, Maureen Major-Campos, Jill Lacy, Karen Michaels, Vanna Dest, Richard Lisitano, Kerin B. Adelson, Rogerio Lilenbaum

Early impact of the Affordable Care Act (ACA) on financial worry.

Poster Session A: Practice of Quality and Cost, Value, and Policy in Quality

Amy J. Davidoff, Xin Hu, Helen M. Parsons, Zhiyuan Zheng

Quality of life (QoL) in patients (pts) with squamous (SCC) NSCLC treated with nab-paclitaxel with carboplatin (nab-P/C) induction therapy: Interim analysis of the phase III ABOUND.sqm study.

Poster Session A: Practice of Quality and Cost, Value, and Policy in Quality

Rogerio Lilenbaum, Corey J. Langer, Robert M. Jotte, Edward S. Kim, Amy Ko, Teng Jin Ong, Mark A. Socinski, Peter Staib, Nataliya Trunova, David R. Spigel

Alliance for Cancer Gene Therapy (ACGT) has announced that **Samuel Katz, MD, PhD**, a member of Yale Cancer Center's Genomics, Genetics, and Epigenetics Research Program, has been awarded a **2016**



Joan Steitz named 2016 recipient of the DeVane Medal

[Read More >>](#)

Join Yale Cancer Center on Facebook

Like us on Facebook 

LATEST POSTS:

Drs. Alexander F. Au, MD, Brigid Killelea, MD, MPH, FACS, and team performing surgery at Smilow Cancer Hospital at Yale-New Haven. Learn more about our services and how we're bringing together some of the nation's best minds to develop new methods to prevent, diagnose and treat cancer.



[Read More >>](#)

Yale researchers, led by Dr. Jeffrey Townsend, have revealed new insights into the genetic origins of tumor metastases. Although scientists have long thought that cancer results from mutations that persist over time, the study reveals that tumors contain significant genetic differences, with mutations

ACGT Young Investigator Grant to support his research on the Use of RNA to Kill Blood Cancers.

Lynne Regan, PhD, a member of Yale Cancer Center's Developmental Therapeutics Research Program, has been selected as an honoree in the **2016 Women of Innovation®** program by the **Connecticut Technology Council**.

Research in the News

Understanding the cancer-killing properties of a chemical commando

A Yale lab has unlocked the process by which a natural anti-cancer agent is able to bind to DNA and directly break both strands. The discovery may be helpful in developing synthetic molecules for cancer therapies that can effectively disrupt the replication of DNA in diseased cells, say the researchers. The findings appeared online in the journal *Proceedings of the National Academy of Sciences*.

Using sophisticated, computational modeling, plus nuclear magnetic resonance spectroscopy, the researchers were able to find the key: proximity. Lomaiviticin A has the ability to bind with DNA in such a way that it places two essential reactive parts of the molecule in close proximity to each DNA strand.

[Read More >>](#)

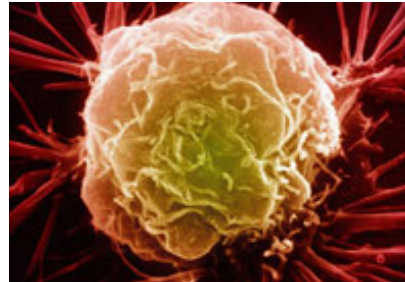
Yale scientists identify gene that regulates the growth of melanoma

Yale Cancer Center researchers have identified a gene in melanoma that can dramatically affect the growth of the disease. The findings, published in the journal *Cell Reports*, provide new insight into how melanoma grows and identifies a new target for treatment of melanoma and other cancers.

Enzymes that chemically modify DNA, known as DNA methyltransferases, play critical roles in regulating gene expression during development, but their role in cancer formation is less clear. The new Yale study has uncovered a novel role for a specific DNA methyltransferase enzyme - DNMT3B - in regulating melanoma growth.

[Read More >>](#)

that evolve and develop over time. "Because we now know cancer simultaneously evolves along multiple trajectories," Dr. Townsend said, oncologists can better develop therapies "to outmaneuver the disease."



[Read More >>](#)

Join us on March 9th at BAR in New Haven to kick off preparations for the 6th Annual Closer to Free Ride! Raising \$2.2 million toward patient care and cancer research last year, the ride is Yale Cancer Center's and Smilow Cancer Hospital's largest annual fundraiser. Those who register at the kick off event as a rider or volunteer will get a Closer to Free gift!



[Read More >>](#)

"There is a tremendous amount we can do to enhance a patient's quality of life," according to Dr. Cary Gross, director of Yale's Cancer Outcomes Public Policy and Effectiveness Research (COPPER) Center. That is why a proposal for improving the partnership between metastatic breast cancer patients and their medical care teams has garnered Yale Cancer Center one of only ten awards from the National

Employee Profile: Alaine Nellis Savage

With the naming of Dr. Peter Schulam as Director of Yale Cancer Center & Physician-in-Chief of Smilow Cancer Hospital (Interim) in September 2015, there has been an increased need for strong administrative support in the Director's Office. Alaine Nellis Savage, Senior Administrative Assistant to the Director, has played a key role during this transition to ensure things continue to run smoothly. She handles general administrative tasks such as scheduling and booking travel but also serves as a main point of contact for Yale Cancer Center and a liaison between the Cancer Center and Smilow.



Alaine receives correspondence daily from Cancer Center members and patients who are looking for specific information. In the almost two years that she has been here, Alaine has developed a great deal of institutional knowledge, and is able to answer these questions and resolve any issues. She also directs and distributes communication on behalf of the Director and the Cancer Center.

"I interact with many different people on a daily basis, from physicians to administrative assistants," said Alaine. "This position requires a person to be level-headed and articulate, with very good attention to detail. Many communications, such as offer letters and letters of institutional support, are sent from the Director's Office on a regular basis, and I ensure they effectively represent Dr. Schulam and the Cancer Center."

Alaine is someone who always likes to learn new things, and has worked to develop strong relationships with other staff. Christen Ruff, Chief of Staff for the Director's Office, commented, "Alaine is the face of the Director's Office and consistently represents us well. She is dedicated to providing the best support to the Director, patients, and all faculty with whom she corresponds. Her kind and pleasant demeanor has always made her approachable and she is

Comprehensive Cancer Network (NCCN) in collaboration with Pfizer.



**A new way to improve care
for breast cancer patients**

[Read More >>](#)

After having survived leukemia as a child, David Andrew is an extraordinary nurse at Smilow Cancer Hospital. At our Care Center at Waterbury, David cares for patients with various cancers and helps to guide them through the process of diagnosis and treatment. As a designated Magnet Champion at Yale-New Haven Hospital, David motivates staff by serving as a liaison for education, raising nursing awareness, and celebrating nursing excellence.

According to Lisa Shomsky, Clinical Program Manager for the Smilow Care Centers, "The consistent message heard from his peers is that 'patients love him.'" We are grateful to have Dave on our team!



**David
Andrew**
An Extraordinary
Nurse

[Read More >>](#)

**Follow Yale Cancer
Center on Twitter**

a great representative of YCC to our external constituents."

Funding and Award Opportunities

All current funding opportunities are archived on the Yale Cancer Center website, and searchable by topic, funding agency, and due date. Please check the site often for new opportunities. [Learn More >>](#)

Society for Immunotherapy of Cancer Fellowships

In concert with the Society's mission to improve cancer patient outcomes through the development and application of cancer immunotherapy, SITC is presenting to young investigators the following **one-year fellowship opportunities**, which were made possible through the generosity and partnership of the organizations listed below.

- 2016 SITC-AstraZeneca Cancer Immunotherapy Clinical Fellowship in Non-Small Cell Lung Cancer (NSCLC)
- 2016 SITC-EMD Serono Cancer Immunotherapy Clinical Fellowship
- 2016 SITC-Genentech Postdoctoral Cancer Immunotherapy Basic Fellowship in Related Biomarkers
- 2016 SITC-Genentech Postdoctoral Cancer Immunotherapy Clinical Fellowship in Related Biomarkers or Mechanism of Action (MOA)

Application Deadline: March 7, 2016


[Learn More >>](#)


Damon Runyon-Sohn Pediatric Cancer Fellowship Award


This award provides funding to basic scientists and clinicians who conduct research with the potential to significantly impact the prevention, diagnosis or treatment of one or more pediatric cancers. Applicants are not required to be pediatricians or members of pediatric departments; however, the proposed research must have direct relevance to one or more pediatric cancers. This four year award is \$50,000 per year for basic scientists, and \$60,000 per year for physician scientists. In addition, an annual \$2,000 expense allowance is awarded to the laboratory in which the Fellow is working and can be used

Follow us on [twitter](#)

LATEST TWEETS:

 Why STAT is the media startup to envy

 Alexion homecoming is a symbol of #biomedical growth in #NewHaven

 Yale discovery may lead to more effective cancer therapies

 Waste in Cancer Drugs Costs \$3 Billion a Year, a Study Says
<http://nyti.ms/1LspgcU>

 The #cancer killing properties of a chemical commando
<http://bit.ly/21Ez33T> @InsideYCC

Closer to Free

closer to free
The fund to advance cancer research and enhance patient care

Calendar

March 4; 12PM

YCC Research in Progress Seminar

NP4-101B

TBA

Don Nguyen, PhD

[Read More >>](#)

March 6; 6PM

Yale Cancer Center Answers

WNPR

Cancer Biology and Therapeutics

by the Fellow for his/her educational and scientific expenses. The Foundation also provides a Dependent Child Allowance of \$1,000 per child per year. The award may not be used for institutional overhead or indirect costs.

Application Deadline: March 16, 2016

[Learn More >>](#)

Schwartz Center Compassionate Caregiver of the Year Award

Each year the Schwartz Center for Compassionate Healthcare honors extraordinary health care professionals with the National Compassionate Caregiver of the Year (NCCY) Award. The award recognizes caregivers from across the country who exemplify characteristics of compassionate care, including: communicating sensitively with patients and loved ones; listening carefully, showing empathy and instilling hope; respecting patients' values, culture, choices and decisions; and understanding the significance of patients' families and communities.

An individual health care professional or team that works directly with patients in any U.S. health care setting is eligible for this prestigious national award.

Application Deadline: March 31, 2016

[Learn More >>](#)

Department of Defense Breast Cancer Research Program Grants Breakthrough Award

Investigators at all academic levels (or equivalent) Senior postdoctoral fellows who do not meet the eligibility requirements of the Breakthrough Fellowship Award are encouraged to apply under Funding Levels 1 and 2 Supports promising research that has the potential to lead to or make breakthroughs in breast cancer Potential impact of the research may be near-term or long-term, but it must be significant and go beyond an incremental advancement.

Breakthrough Fellowship Award (NEW!)

Successfully completed the requirements for a doctoral or medical degree, and been in the laboratory or clinical research setting in which the proposed research is to be performed for no more than 2 years, and A total of less than 4 years experience in a postdoctoral fellowship or mentored clinical research training program (excludes any clinical residency or fellowship training).

Era of Hope Scholar Award

Independent, non-mentored investigators within 6 years of their last training position (e.g., postdoctoral fellowship, medical residency, clinical fellowship) as of the application submission deadline Supports exceptionally talented,

Ranjit Bindra, MD, PhD

[Read More >>](#)

March 7; 10:30AM

YCC Radiobiology and Radiotherapy Research Program Seminar

SHM I-304

The BRCA 2 Landscape: Demystifying Domains, Variants and Modifications

Judit Jimenez Sainz, PhD

[Read More >>](#)

March 7; 4PM

Employee and Family Resources

Park Street Seminar Room, 202

Mindfulness Solutions: A Class for Caregivers

[Read More >>](#)

March 8; 9:30AM

Pathology Research in Progress Talks

TAC N-107

TBA

Mate Nagy and Lizhen Wu, PhD

[Read More >>](#)

March 8; 12PM

Yale Cancer Center Grand Rounds

Park Street Auditorium

Ras Oncogene in Cancer Pathogenesis and Therapy

Dafna Bar-Sagi, PhD

[Read More >>](#)

March 8; 5PM

YNHH Transforming Healthcare Grand Rounds

Fitkin Amphitheater, LMP 1094

What is NCQA and Why Should You Care?

Michael S. Barr, MD, MBA, MACP

[Read More >>](#)

March 9; 1 PM

creative early-career scientists who have demonstrated that they are the "best and brightest" in their fields.

Innovator Award

Associate Professor or above (or equivalent). Supports visionary individuals who have demonstrated creativity, innovative work, and leadership in any field. Provides opportunity to pursue novel, visionary, high-risk ideas that will accelerate progress toward ending breast cancer. Pls must include breast cancer advocates on their research team.

Letter of Intent Deadline: April 21, 2016

[Learn More >>](#)

Prostate Cancer Foundation Challenge Awards

Challenge awards are awarded to investigations of metastatic, lethal prostate cancer. These awards will be funded depending on the level of innovation in applications received. High risk, currently unfunded projects are most desired.

Application Deadline: April 29, 2016

[Learn More >>](#)

Prostate Cancer Foundation Young Investigator Award

PCF Young Investigator Awards will be three (3) years in duration and will provide \$75,000 per year. The award funds may be used flexibly to advance the career and research efforts of the awardee. Every PCF Young Investigator is required to be under the direct supervision of a mentor. Applicants should be within six-years following completion of a professional degree or clinical training such as MD, PhD, MD-PhD, DSc, ScD, DDM, DDS, DMD, MBBS or equivalent and hold the title of Postdoctoral Fellow, Instructor, Research Associate, Assistant Professor, or equivalent.

Application Deadline: April 29, 2016

[Learn More >>](#)

Damon Runyon Innovation Award

The Damon Runyon-Rachleff Innovation Award is designed to provide support for the next generation of exceptionally creative thinkers with "high-risk/high-reward" ideas that have the potential to significantly impact our understanding of and/or approaches to the prevention, diagnosis or treatment of cancer.

The Innovation Award is specifically designed to provide funding to extraordinary early career researchers who have an innovative new idea but lack sufficient preliminary data to obtain traditional funding. It is not designed to fund incremental advances. The research supported by the award must be novel, exceptionally creative and, if successful, have the strong potential for high impact in the cancer field.

Cancer Metabolism Interest Group Meeting

Giarman Room; B 201

Environment Impacts of the Metabolic Dependencies of Ras-Driven NSCLC

Tiago Alves, PhD

[Read More >>](#)

March 10; 9AM

Therapeutic Radiology Grand Rounds

Smilow NP4 101-A

Novel Endophte-Derived DNA Repair Inhibitors as Potential Anticancer Agents

Faye Rogers, PhD

[Read More >>](#)

March 10; 12:30PM

Pathology Grand Rounds

Fitkin Amphitheater, LMP 1094

Lung Cancer Stemness and Metastasis: Novel Mechanisms and Therapeutic Targets

Srikumar Chellapan, PhD

[Read More >>](#)

March 10; 2PM

YCC Cancer Prevention and Control Research Program

YSPH, Rm 216

NIH Funding

William Klein, PhD

[Read More >>](#)

March 13; 6PM

Yale Cancer Center Answers

WNPR 90.5

Cervical Cancer Screening

Masoud Azodi, MD

[Read More >>](#)

March 14; 3PM

YCC Special Seminar

Fitkin Amphitheatre - LMP 1094

Translational Outcomes Research: Improving the Delivery of Breast Cancer Care

Application Deadline: July 1, 2016

[Learn More >>](#)

Recent Publications

Palliative Care Version 1.2016.

Levy M, Smith T, Alvarez-Perez A, Back A, Baker JN, Beck AC, Block S, Dalal S, Dans M, Fitch TR, Kapo J, Kutner JS, Kvale E, Misra S, Mitchell W, Portman DG, Sauer TM, Spiegel D, Sutton L, Szmuiłowicz E, Taylor RM, Temel J, Tickoo R, Urba SG, Weinstein E, Zachariah F, Bergman MA, Scavone JL.

J Natl Compr Canc Netw. 2016 Jan;14(1):82-113.

[Read More >>](#)

Critical Care at the End of Life.

Akgün KM, Kapo JM, Siegel MD.

Semin Respir Crit Care Med. 2015 Dec;36(6):921-33. doi: 10.1055/s-0035-1565254. Epub 2015 Nov 24.

[Read More >>](#)

Integrating Palliative Care Into the Care of Patients With Advanced Lung Cancer.

Kapo JM, Akgün KM.

Cancer J. 2015 Sep-Oct;21(5):434-9.

[Read More >>](#)

Structural basis for DNA cleavage by the potent antiproliferative agent (-)-lomaiviticin A.

Woo CM, Li Z, Paulson EK, Herzon SB.

Proc Natl Acad Sci U S A. 2016 Feb 29.

[Read More >>](#)

Docetaxel As Monotherapy or Combined With Ramucirumab or Icrucumab in Second-Line Treatment for Locally Advanced or Metastatic Urothelial Carcinoma: An Open-Label, Three-Arm, Randomized Controlled Phase II Trial.

Petrylak DP, Tagawa ST, Kohli M, Eisen A, Canil C, Sridhar SS, Spira A, Yu EY, Burke JM, Shaffer D, Pan CX, Kim JJ, Aragon-Ching JB, Quinn DI, Vogelzang NJ, Tang S, Zhang H, Cavanaugh CT, Gao L, Kauh JS, Walgren RA, Chi KN.

Dawn L. Hershman, MD, MS

[Read More >>](#)

March 14; 4PM

Employee and Family Resources

Park Street Seminar Room, 202

Mindfulness Solutions: A Class for Caregivers

[Read More >>](#)

March 15; 12PM

Yale Cancer Center Grand Rounds

Park Street Auditorium

Skin SPORE

Jonathan Chernoff, MD, PhD

[Read More >>](#)

March 15; 5PM

YCC Breast Clinical Lecture Series

Smilow first floor conference room, 1-330

Advances in Radiation Treatment: Reducing Toxicity in Breast Cancer Radiotherapy

Melissa Rasar Young, MD, PhD

[Read More >>](#)

March 16; 12PM

YCC Cancer Prevention & Control Research Program Seminar

YSPH, Room 216

Strategies to Improve HPV Vaccination Rates in Clinical Settings

Sangani Sheth, MD, MPH

[Read More >>](#)

March 18; 8AM

YSM Dean's Office / Laboratory Medicine Seminar

Yale's West Campus

Conference Center

Cellular Immunotherapy Summit at Yale

[Read More >>](#)

March 18; 12PM

J Clin Oncol. 2016 Feb 29.

[Read More >>](#)

Transarterial Therapies for Hepatocellular Carcinoma: a Comprehensive Review with Current Updates and Future Directions.

Kumar Y, Sharma P, Bhatt N, Hooda K.
Asian Pac J Cancer Prev. 2016;17(2):473-8.

[Read More >>](#)

DNMT3b Modulates Melanoma Growth by Controlling Levels of mTORC2 Component RICTOR.

Micevic G, Muthusamy V, Damsky W, Theodosakis N, Liu X, Meeth K, Wingrove E, Santhanakrishnan M, Bosenberg M.

Cell Rep. 2016 Feb 24.

[Read More >>](#)

Cell Phone Ownership and Service Plans Among Low-Income Smokers: The Hidden Cost of Quitlines.

Bernstein SL, Rosner JM, Toll B.
Nicotine Tob Res. 2016 Feb 26.

[Read More >>](#)

Pairing smoking-cessation services with lung cancer screening: A clinical guideline from the Association for the Treatment of Tobacco Use and Dependence and the Society for Research on Nicotine and Tobacco.

Fucito LM, Czabafy S, Hendricks PS, Kotsen C, Richardson D, Toll BA; Association for the Treatment of Tobacco Use and Dependence (ATTUD)/Society for Research on Nicotine and Tobacco (SRNT) Synergy Committee.

Cancer. 2016 Feb 24.

[Read More >>](#)

The Neoadjuvant Model and Complete Pathologic Response in Breast Cancer: All or Nothing?

Bossuyt V, Hatzis C.
JAMA Oncol. 2016 Feb 25.

[Read More >>](#)

Bisphenol A (BPA) Exposure In Utero Leads to Immunoregulatory Cytokine Dysregulation in the

YCC Research in Progress Seminar

Park Street Auditorium

Targeting Homologous Recombination Deficiency in Prostate Cancer

Tony Kim, MD

[Read More >>](#)

March 18; 1PM

YCC Developmental Therapeutics Research Program

SHM I-116

Macrophage Migration Inhibitory Factor in Leukemia and Lymphoma

Elias Lolis, PhD

[Read More >>](#)

Submissions

Please submit your recent publication and grant announcements to:

Renee Gaudette

Director, Public Affairs and Marketing

renee.gaudette@yale.edu

 Forward to a Friend

**Mouse Mammary Gland: A Potential Mechanism
Programming Breast Cancer Risk.**

Fischer C, Mamillapalli R, Goetz LG, Jorgenson E, Ilagan
Y, Taylor HS.

Horm Cancer. 2016 Feb 24.

[Read More >>](#)